

SELP MAB (CRIZANLIZUMAB)

Cat.#: 28080

Product Name: Anti-SELP(Crizanlizumab) Monoclonal Antibody

Synonyms: P-Selectin;D62P;ELP;MP-140

Description: Anti-SELP(crizanlizumab) Monoclonal Antibody

Background: Research grade biosimilar. Not for use in therapeutic or diagnostic procedures for humans or animals.

Applications: Flow Cyt

Recommended Dilutions: Flow Cyt 1:100

Host Species: Humanized

Isotype: IgG2

Purification: Purified from cell culture supernatant by affinity chromatography

Species Reactivity: Human SELP

Constituents: Lyophilized from sterile PBS, pH 7.4. 5 % – 8% trehalose is added as protectants before lyophilization.

Storage & Shipping: Store at -20°C to -80°C for 12 months in lyophilized form. After reconstitution, if not intended for use within a month, aliquot and store at -80°C (Avoid repeated freezing and thawing).

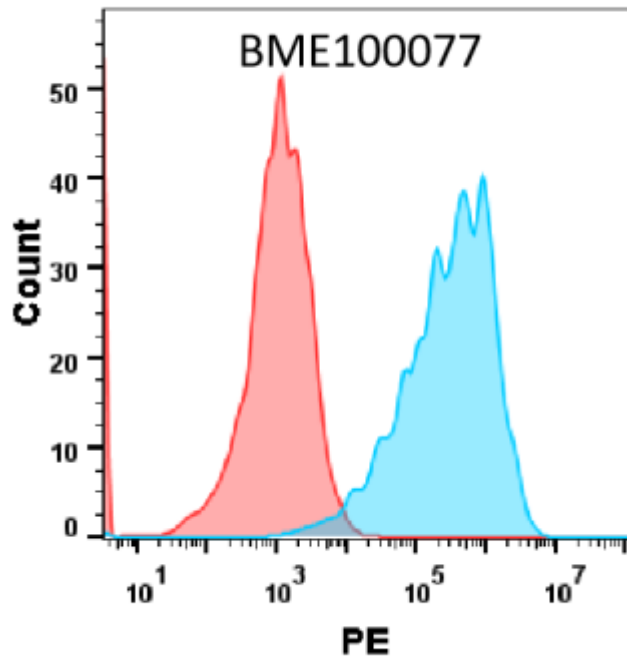


Figure 1. HEK293 cell line transfected with irrelevant protein (red histogram) and human SELP protein (blue histogram) were surface stained with Anti-SELP (crizanalizumab biosimilar) mAb 1 μ g/ml followed by PE-conjugated Goat anti-Human IgG secondary antibody.