

## CRTAM (DMC673) IGG1 CHIMERIC MAB

**Cat.#:** 28274

**Product Name:** Anti-CRTAM(DMC673) IgG1 Chimeric Monoclonal Antibody

**Synonyms:** CD355

**Description:** Anti-CRTAM antibody(DMC673) IgG1 Chimeric Monoclonal Antibody

**Background:** The CRTAM gene is upregulated in CD4 (see MIM 186940)-positive and CD8 (see CD8A; MIM 186910)-positive T cells and encodes a type I transmembrane protein with V and C1-like Ig domains (Yeh et al.; 2008 [PubMed 18329370]).[supplied by OMIM; Feb 2009]

**Applications:** Flow Cyt

**Recommended Dilutions:** Flow Cyt 1:100

**Host Species:** Rabbit

**Isotype:** Rabbit:Human Fc chimeric IgG1

**Purification:** Purified from cell culture supernatant by affinity chromatography

**Species Reactivity:** Human CRTAM

**Constituents:** Lyophilized from sterile PBS, pH 7.4. 5 % – 8% trehalose is added as protectants before lyophilization.

**Storage & Shipping:** Store at -20°C to -80°C for 12 months in lyophilized form. After reconstitution, if not intended for use within a month, aliquot and store at -80°C (Avoid repeated freezing and thawing).

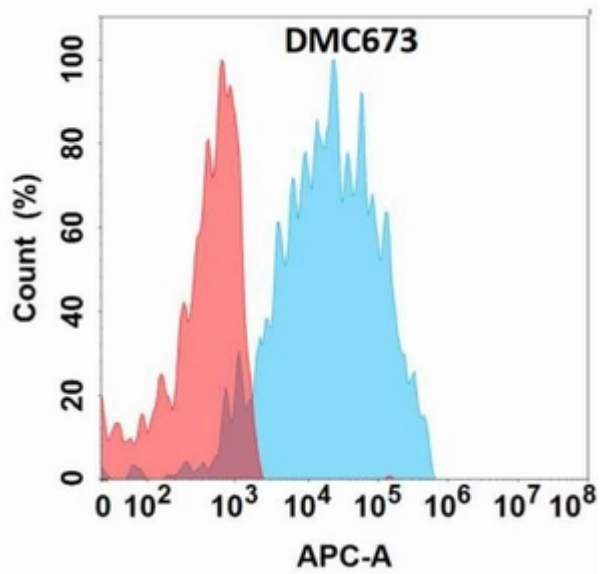


Figure 1. Flow cytometry analysis with Anti-CRTAM(DMC673) on Expi293 cells transfected with human CRTAM(Blue histogram) or Expi293 transfected with irrelevant protein (Red histogram).