

CTCF MAB

CTCF Monoclonal Antibody

Cat. #: 26354

Gene Symbol: CTCF; MRD21

Description: Anti-CTCF Mouse Monoclonal Antibody

Background: Transcriptional repressor CTCF also known as 11-zinc finger protein or CCCTC-binding factor is a transcription factor that in humans is encoded by the CTCF gene. CTCF is involved in many cellular processes, including transcriptional regulation, insulator activity, recombination and regulation of chromatin architecture.

Immunogen: A synthetic peptide from the internal region of CTCF protein, human origin.

Applications: ELISA, WB, IHC

Recommended Dilutions:

ELISA: 1:1000-1:5000

WB: 1:500-1:1000

IHC: 1:50-1:100

Concentration: 0.5 mg/ml

Host Species: Mouse

Format: Liquid

Clonality: Monoclonal

Isotype: IgG

Purity: Purified from ascites

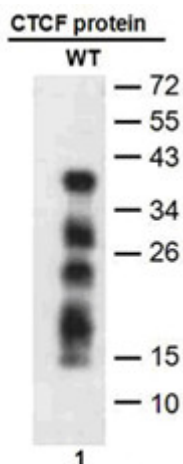
Preservative: No

Constituents: PBS (without Mg²⁺ and Ca²⁺), pH 7.4, 150 mM NaCl, 50% glycerol

Species Reactivity: Recognizes CTCF of vertebrates.

Storage Conditions: Store at -20°C. Avoid repeated freezing and thawing

Western blot:

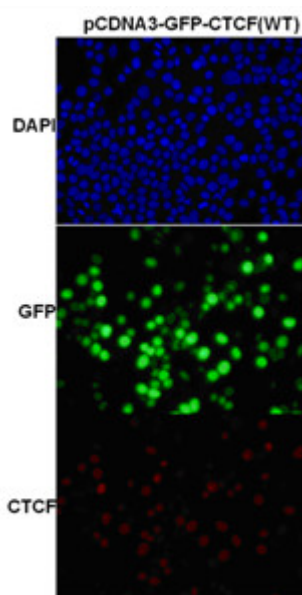


WB: anti-CTCF mAb

Western blot analysis of recombinant CTCF proteins.

Purified His-tagged CTCF protein (lane 1) was blotted with anti CTCF monoclonal antibody (Cat. #26354).

Immunofluorescence:



Immunofluorescence of cells expressing CTCF protein with anti CTCF antibody.

HEK293T cells were transfected with pCDNA3-GFP-CTCF plasmid, then fixed and stained with anti CTCF monoclonal antibody (Cat. #26354).