

CTCF(R339W)**CTCF(R339W)****Cat. #:** 26326**Gene Symbol:** CTCF; MRD21**Description:** Anti-CTCF(R339W) Mouse Monoclonal Antibody**Background:** Transcriptional repressor CTCF also known as 11-zinc finger protein or CCCTC-binding factor is a transcription factor that in humans is encoded by the CTCF gene. CTCF is involved in many cellular processes, including transcriptional regulation, insulator activity, recombination and regulation of chromatin architecture.**Immunogen:** A synthetic peptide from the internal region of CTCF which includes the mutation of R339W, human origin.**Applications:** ELISA, WB, IHC**Recommended Dilutions:**

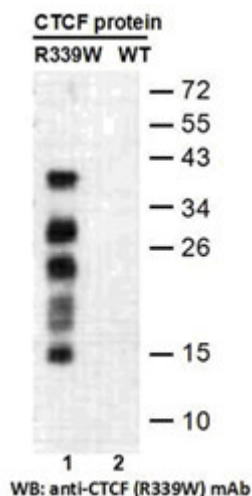
ELISA: 1:1000–1:5000

WB: 1:500–1:1000

IHC: 1:50–1:100

Concentration: 1 mg/ml**Host Species:** Mouse**Format:** Liquid**Clonality:** Monoclonal**Isotype:** IgG**Purity:** Purified from ascites**Preservative:** No**Constituents:** PBS (without Mg²⁺ and Ca²⁺), pH 7.4, 150 mM NaCl, 50% glycerol**Species Reactivity:** Recognizes R339W mutant, but not wild type CTCF of vertebrates.**Storage Conditions:** Store at –20°C. Avoid repeated freezing and thawing

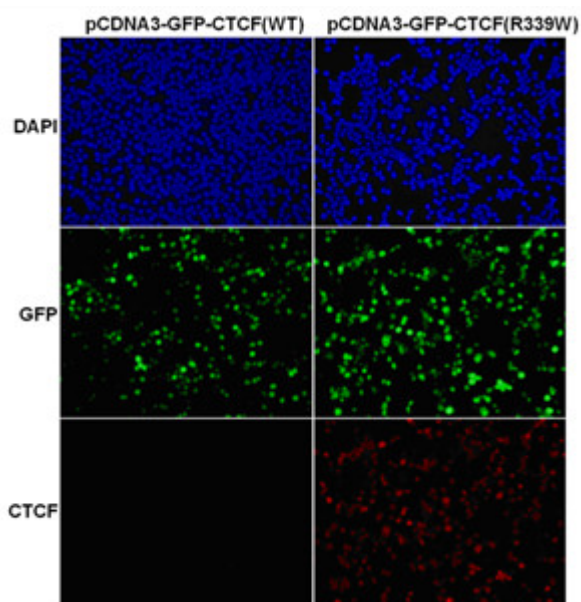
Western blot:



Western blot analysis of recombinant CTCF (R339W) and wild type proteins.

Purified His-tagged CTCF (R339W) protein (lane 1) and corresponding wild type protein (lane 2) were blotted with Anti-CTCF(R339W) monoclonal antibody (Cat. #26326).

Immunofluorescence:



Immunofluorescence of cells expressing CTCF proteins with Anti-CTCF(R339W) antibody.

HEK293T cells were transfected with pCDNA3-GFP-CTCF (WT) plasmid (left column) or pCDNA3-GFP-CTCF (R339W) plasmid (right column), then fixed and stained with Anti-CTCF(R339W) monoclonal antibody (Cat. #26326).