

## CTLA-4 (DM50) RABBIT MAB

**Cat.#:** 28345

**Product Name:** Anti-CTLA-4(DM50) Rabbit Monoclonal Antibody

**Synonyms:** CTLA4; CD152

**Description:** Anti-CTLA-4 antibody(DM50) Rabbit Monoclonal Antibody

**Background:** This gene is a member of the immunoglobulin superfamily and encodes a protein which transmits an inhibitory signal to T cells. The protein contains a V domain; a transmembrane domain; and a cytoplasmic tail. Alternate transcriptional splice variants; encoding different isoforms; have been characterized. The membrane-bound isoform functions as a homodimer interconnected by a disulfide bond; while the soluble isoform functions as a monomer. Mutations in this gene have been associated with insulin-dependent diabetes mellitus; Graves disease; Hashimoto thyroiditis; celiac disease; systemic lupus erythematosus; thyroid-associated orbitopathy; and other autoimmune diseases.

**Applications:** ELISA; Flow Cyt

**Recommended Dilutions:** ELISA 1:5000-10000; Flow Cyt 1:100

**Host Species:** Rabbit

**Isotype:** Rabbit IgG

**Purification:** Purified from cell culture supernatant by affinity chromatography

**Species Reactivity:** Human CTLA-4

**Constituents:** Lyophilized from sterile PBS, pH 7.4. 5 % - 8 % trehalose is added as protectants before lyophilization.

**Storage & Shipping:** Store at -20°C to -80°C for 12 months in lyophilized form. After reconstitution, if not intended for use within a month, aliquot and store at -80°C (Avoid repeated freezing and thawing).

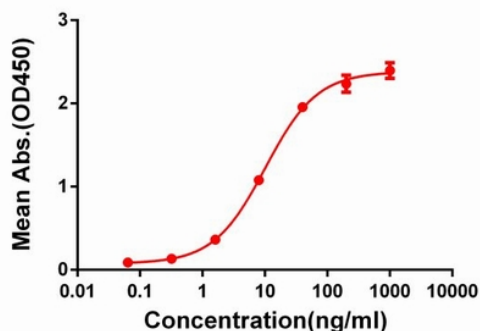


Figure 1. ELISA plate pre-coated by 2 µg/ml (100 µl/well) Human CTLA4 protein, mFc-His tagged protein 11145 can bind Rabbit anti-CTLA4 monoclonal antibody (clone: DM50) in a linear range of 1-100 ng/ml.

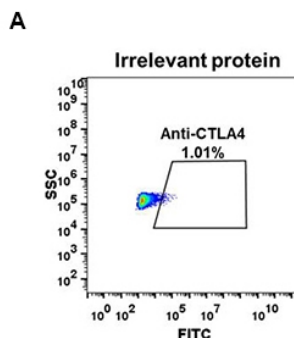


Figure 2. Expi 293 cell line transfected with irrelevant protein (A) and human CTLA4 (B) were surface stained with Rabbit anti-CTLA4 monoclonal antibody 1 µg/ml (clone: DM50) followed by Alexa 488-conjugated anti-rabbit IgG secondary antibody.

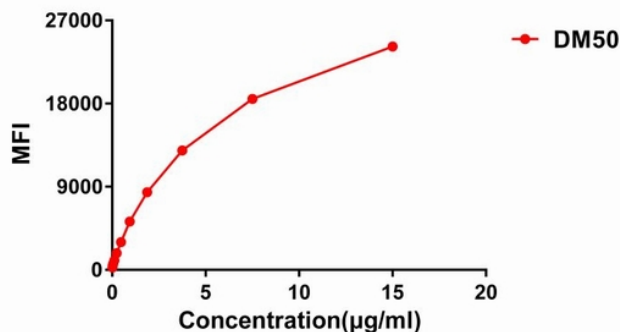


Figure 3. Flow cytometry data of serially titrated Rabbit anti-CTLA4 monoclonal antibody (clone: DM50) on Raji cells. The Y-axis represents the mean fluorescence intensity (MFI) while the X-axis represents the concentration of IgG used.

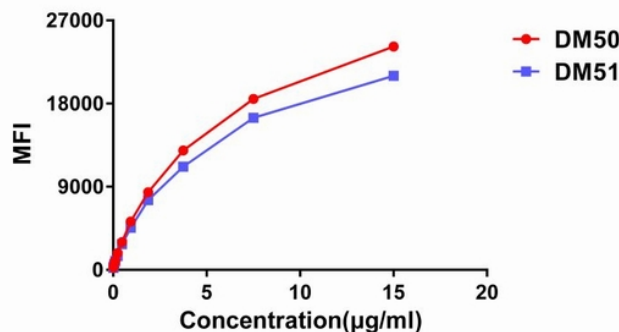


Figure 4. Affinity ranking of different Rabbit anti-CTLA4 mAb clones by titration of different concentration onto Raji cells. The Y-axis represents the mean fluorescence intensity (MFI) while the X-axis represents the concentration of IgG used.

