

CXCR1 (DMC470) IGG1 CHIMERIC MAB**Cat.#:** 28246**Product Name:** Anti-CXCR1(DMC470) IgG1 Chimeric Monoclonal Antibody**Synonyms:** C-C; C-C-CKR-1; CD128; CD181; CDw128a; CKR-1; CMKAR1; IL8R1; IL8RA; IL8RBA**Description:** Anti-CXCR1 antibody(DMC470) IgG1 Chimeric Monoclonal Antibody**Background:** The protein encoded by this gene is a member of the G-protein-coupled receptor family. This protein is a receptor for interleukin 8 (IL8). It binds to IL8 with high affinity; and transduces the signal through a G-protein activated second messenger system. Knockout studies in mice suggested that this protein inhibits embryonic oligodendrocyte precursor migration in developing spinal cord. This gene; IL8RB; a gene encoding another high affinity IL8 receptor; as well as IL8RBP; a pseudogene of IL8RB; form a gene cluster in a region mapped to chromosome 2q33-q36. [provided by RefSeq; Jul 2008]**Applications:** Flow Cyt**Recommended Dilutions:** Flow Cyt 1:100**Host Species:** Rabbit**Isotype:** Rabbit:Human Fc chimeric IgG1**Purification:** Purified from cell culture supernatant by affinity chromatography**Species Reactivity:** Human CXCR1**Constituents:** Lyophilized from sterile PBS, pH 7.4. 5 % – 8% trehalose is added as protectants before lyophilization.**Storage & Shipping:** Store at -20°C to -80°C for 12 months in lyophilized form. After reconstitution, if not intended for use within a month, aliquot and store at -80°C (Avoid repeated freezing and thawing).

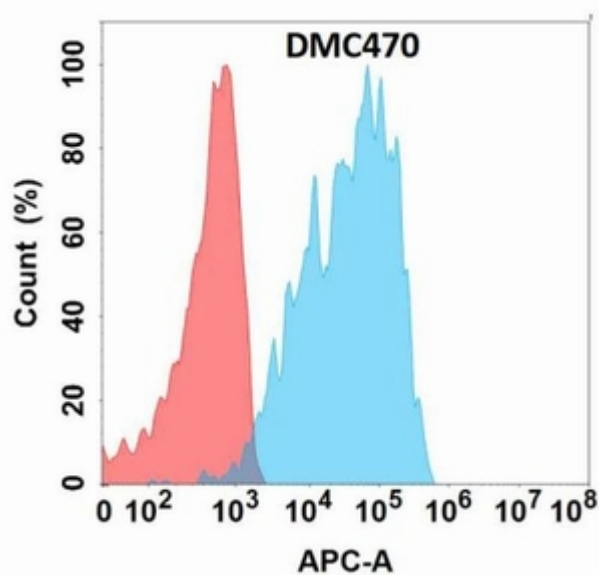


Figure 1. Flow cytometry analysis with Anti-CXCR1 (DMC470) on Expi293 cells transfected with human CXCR1 (Blue histogram) or Expi293 transfected with irrelevant protein (Red histogram).