

**CXCR3 (DM208) RABBIT MAB****Cat.#:** 28551**Product Name:** Anti-CXCR3(DM208) Rabbit Monoclonal Antibody**Synonyms:** CD182; CD183; CKR-L2; CMKAR3; GPR9; IP10-R; Mig-R; MigR**Description:** Anti-CXCR3 antibody(DM208) Rabbit Monoclonal Antibody**Background:** This gene encodes a G protein-coupled receptor with selectivity for three chemokines; termed CXCL9:Mig (monokine induced by interferon-g); CXCL10:IP10 (interferon-g-inducible 10 kDa protein) and CXCL11:I-TAC (interferon-inducible T cell  $\alpha$ -chemoattractant). Binding of chemokines to this protein induces cellular responses that are involved in leukocyte traffic; most notably integrin activation; cytoskeletal changes and chemotactic migration. Alternatively spliced transcript variants encoding different isoforms have been found for this gene. One of the isoforms (CXCR3-B) shows high affinity binding to chemokine; CXCL4:PF4 (PMID:12782716). [provided by RefSeq; Jun 2011]**Applications:** ELISA; Flow Cyt**Recommended Dilutions:** ELISA 1:5000-10000; Flow Cyt 1:100**Host Species:** Rabbit**Isotype:** Rabbit IgG**Purification:** Purified from cell culture supernatant by affinity chromatography**Species Reactivity:** Human CXCR3**Constituents:** Lyophilized from sterile PBS, pH 7.4. 5 % – 8% trehalose is added as protectants before lyophilization.**Storage & Shipping:** Store at -20°C to -80°C for 12 months in lyophilized form. After reconstitution, if not intended for use within a month, aliquot and store at -80°C (Avoid repeated freezing and thawing).

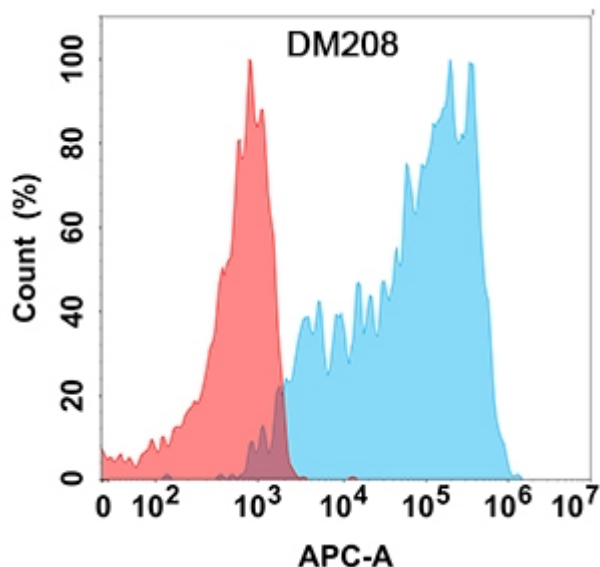


Figure 1. Flow cytometry analysis with Anti-CXCR3 (DM208) on Expi293 cells transfected with human CXCR3 (Blue histogram) or Expi293 transfected with irrelevant protein (Red histogram).