

CXCR4 (DMC680) IGG1 CHIMERIC MAB

Cat.#: 28278

Product Name: Anti-CXCR4(DMC680) IgG1 Chimeric Monoclonal Antibody

Synonyms: CD184; D2S201E; FB22; HM89; HSY3RR; LAP-3; LAP3; LCRI; LESTR; NPY3R; NPYR; NPYRL; NPYY3R; WHIM; WHIMS

Description: Anti-CXCR4 antibody(DMC680) IgG1 Chimeric Monoclonal Antibody

Background: This gene encodes a CXC chemokine receptor specific for stromal cell-derived factor-1. The protein has 7 transmembrane regions and is located on the cell surface. It acts with the CD4 protein to support HIV entry into cells and is also highly expressed in breast cancer cells. Mutations in this gene have been associated with WHIM (warts; hypogammaglobulinemia; infections; and myelokathexis) syndrome. Alternate transcriptional splice variants; encoding different isoforms; have been characterized. [provided by RefSeq; Jul 2008]

Applications: Flow Cyt

Recommended Dilutions: Flow Cyt 1:100

Host Species: Rabbit

Isotype: Rabbit:Human Fc chimeric IgG1

Purification: Purified from cell culture supernatant by affinity chromatography

Species Reactivity: Human CXCR4

Constituents: Lyophilized from sterile PBS, pH 7.4. 5 % – 8% trehalose is added as protectants before lyophilization.

Storage & Shipping: Store at -20°C to -80°C for 12 months in lyophilized form. After reconstitution, if not intended for use within a month, aliquot and store at -80°C (Avoid repeated freezing and thawing).

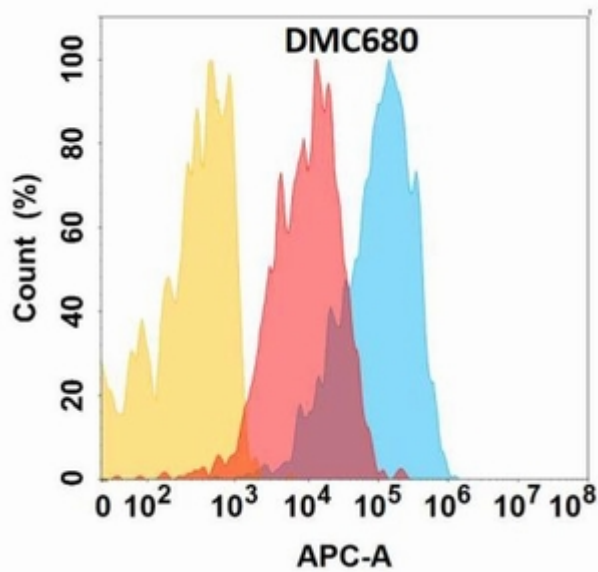


Figure 1. CXCR4 protein is expressed on the surface of Expi293 cell membrane. Flow cytometry analysis with Anti-CXCR4 (DMC680) on Expi293 cells transfected with human CXCR4 (Blue histogram) or Expi293 transfected with irrelevant protein (Red histogram), and Isotype antibody on Expi293 transfected with irrelevant protein (Orange histogram).