

CXCR5 (DMC679) IGG1 CHIMERIC MAB

Cat.#: 28277

Product Name: Anti-CXCR5(DMC679) IgG1 Chimeric Monoclonal Antibody

Synonyms: Brl1; CXC-R5; CXCR-5; Gpcr6; MDR15

Description: Anti-CXCR5 antibody(DMC679) IgG1 Chimeric Monoclonal Antibody

Background: Cytokine receptor that binds to B-lymphocyte chemoattractant (BLC). Involved in B-cell migration into B-cell follicles of spleen and Peyer patches but not into those of mesenteric or peripheral lymph nodes.[UniProtKB:Swiss-Prot Function]

Applications: Flow Cyt

Recommended Dilutions: Flow Cyt 1:100

Host Species: Rabbit

Isotype: Rabbit:Human Fc chimeric IgG1

Purification: Purified from cell culture supernatant by affinity chromatography

Species Reactivity: Human CXCR5

Constituents: Lyophilized from sterile PBS, pH 7.4. 5 % – 8% trehalose is added as protectants before lyophilization.

Storage & Shipping: Store at -20°C to -80°C for 12 months in lyophilized form. After reconstitution, if not intended for use within a month, aliquot and store at -80°C (Avoid repeated freezing and thawing).

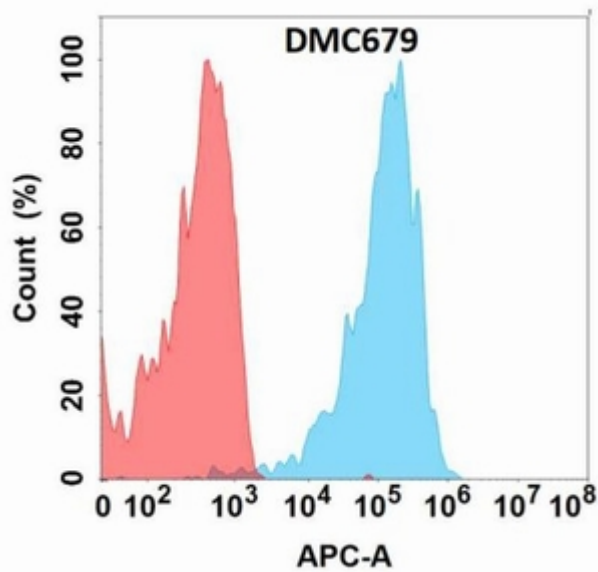


Figure 1. Flow cytometry analysis with Anti-CXCR5(DMC679) on Expi293 cells transfected with human CXCR5(Blue histogram) or Expi293 transfected with irrelevant protein (Red histogram).