

CXCR7 (DMC443) IGG1 CHIMERIC MAB**Cat.#:** 28231**Product Name:** Anti-CXCR7(DMC443) IgG1 Chimeric Monoclonal Antibody**Synonyms:** Atypical chemokine receptor 3;CXC-R7;CXCR-7;Chemokine orphan receptor 1;G-protein coupled receptor 159;RDC-1**Description:** Anti-CXCR7 antibody(DMC443) IgG1 Chimeric Monoclonal Antibody**Background:** This gene encodes a member of the G-protein coupled receptor family. Although this protein was earlier thought to be a receptor for vasoactive intestinal peptide (VIP); it is now considered to be an orphan receptor; in that its endogenous ligand has not been identified. The protein is also a coreceptor for human immunodeficiency viruses (HIV). Translocations involving this gene and HMGA2 on chromosome 12 have been observed in lipomas.**Applications:** Flow Cyt**Recommended Dilutions:** Flow Cyt 1:100**Host Species:** Rabbit**Isotype:** Rabbit:Human Fc chimeric IgG1**Purification:** Purified from cell culture supernatant by affinity chromatography**Species Reactivity:** Human CXCR7**Constituents:** Lyophilized from sterile PBS, pH 7.4. 5 % – 8% trehalose is added as protectants before lyophilization.**Storage & Shipping:** Store at -20°C to -80°C for 12 months in lyophilized form. After reconstitution, if not intended for use within a month, aliquot and store at -80°C (Avoid repeated freezing and thawing).

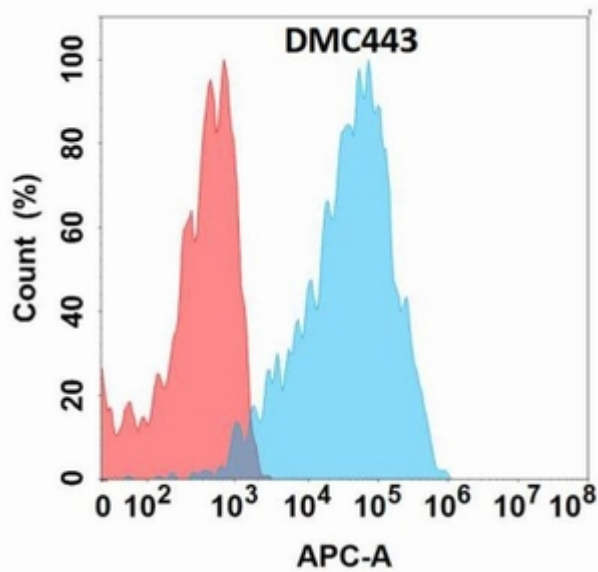


Figure 1. Flow cytometry analysis with Anti-CXCR7 (DMC443) on Expi293 cells transfected with human CXCR7 (Blue histogram) or Expi293 transfected with irrelevant protein (Red histogram).