

CYNOMOLGUS IGHE PROTEIN, HIS TAG**Cat.#:** 12111**Product Name:** Cynomolgus IgHE Protein**Size:** 10 µg, 50 µg and 100 µg**Synonyms:** Immunoglobulin heavy constant epsilon;IGHE**Target:** IgHE**UNIPROT ID:** A0A7N9DC98**Description:** Recombinant Cynomolgus IgHE protein with C-terminal 6xHis tag**Background:** IGHE (Immunoglobulin Heavy Constant Epsilon) is a Protein Coding gene. Diseases associated with IGHE include?Toxocariasis?and?Latex Allergy. Among its related pathways are?Cytokine Signaling in Immune system?and?RET signaling. Gene Ontology (GO) annotations related to this gene include?antigen binding. An important paralog of this gene is?IGHG2.**Species/Host:** HEK293**Molecular Weight:** The protein has a predicted molecular mass of 48.3 kDa after removal of the signal peptide. The apparent molecular mass of clgHE-His is approximately 55-70 kDa due to glycosylation.**Molecular Characterization:** IgHE(Ala1-Gly432) 6×His tag**Purity:** The purity of the protein is greater than 85% as determined by SDS-PAGE and Coomassie blue staining.**Formulation & Reconstitution:** Lyophilized from nanodisc solubilization buffer (20 mM Tris-HCl, 150 mM NaCl, pH 8.0). Normally 5% – 8% trehalose is added as protectants before lyophilization.**Storage & Shipping:** Store at -20°C to -80°C for 12 months in lyophilized form. After reconstitution, if not intended for use within a month, aliquot and store at -80°C (Avoid repeated freezing and thawing). Lyophilized proteins are shipped at ambient temperature.

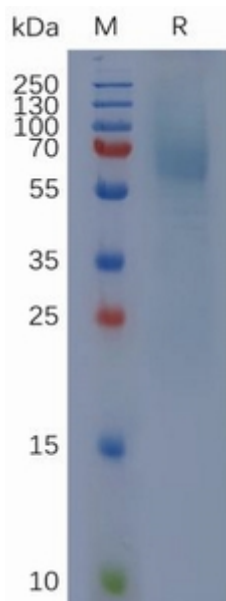


Figure 1. Cynomolgus IgHE Protein, His Tag on SDS-PAGE under reducing condition.