

**CYSTATIN C MAB****Cystatin C Monoclonal Antibody**

**Cat. #:** 26085

**Gene Symbol:** Cystatin C

**Description:** Anti-Cystatin C Mouse Monoclonal Antibody

**Background:** Cystatin C is mainly used as a biomarker of kidney function. It is a potent inhibitor of cysteine proteases.

**Immunogen:** Recombinant full-length Cystatin C protein, human origin.

**Applications:** ELISA, WB, IHC, IP

**Recommended Dilutions:**

ELISA: 1:100–1:5000

WB: 1:100–1:1000

IHC: 1:100–1:1000

**Concentration:** 1 mg/ml

**Host Species:** Mouse

**Format:** liquid

**Clonality:** Monoclonal

**Isotype:** IgG

**Purity:** Purified from ascites

**Preservative:** No

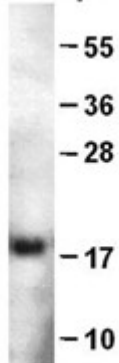
**Constituents:** PBS (without  $Mg^{2+}$  and  $Ca^{2+}$ ), pH 7.4, 150 mM NaCl, 50% glycerol

**Species Reactivity:** Cystatin C antibody recognizes Cystatin C proteins of vertebrates.

**Storage Conditions:** Store at  $-20^{\circ}C$ . Avoid repeated freezing and thawing.

## Immunoprecipitation/Western blot:

Cystatin C protein



WB: Anti-Cystatin C mAb

### Western blot analysis of recombinant full-length Cystatin C protein.

Purified His-tagged Cystatin C protein (Cat. #10157) was blotted with anti Cystatin C monoclonal antibody (Cat. # 26085) at 1:1000 dilution.