

CYSTATIN C PAB**Cystatin C Polyclonal Antibody****Cat. #:** 21108**Gene Symbol:** Cystatin C**Description:** Anti-Cystatin C Rabbit Polyclonal Antibody

Background: Cystatin C, belongs to the cystatin family, is an inhibitor of cysteine proteinases, and is thought to serve an important physiological role as a local regulator of this enzyme activity. It is secreted. Cystatin C is expressed in the highest levels in the epididymis, vas deferens, brain, thymus, and ovary and the lowest in the submandibular gland. It is a potential cerebrospinal fluid marker for the diagnosis of Creutzfeldt-Jakob disease.

Immunogen: A synthetic peptide from the internal region of Cystatin C, human origin.

Applications: ELISA, WB, IHC, IP**Recommended Dilutions:**

ELISA: 1:100–1:5000

WB: 1:100–1:1000

IHC: 1:100–1:1000

Concentration: 0.1 mg/ml**Host Species:** Rabbit**Format:** Liquid**Clonality:** Polyclonal**Isotype:** IgG**Purity:** Purified from serum**Preservative:** No

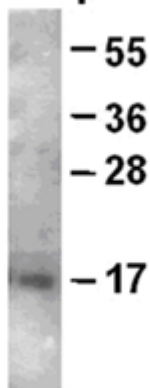
Constituents: PBS (without Mg^{2+} and Ca^{2+}), pH 7.4, 150 mM NaCl, 50% glycerol

Species Reactivity: Cystatin C antibody recognizes Cystatin C proteins of vertebrates.

Storage Conditions: Store at $-20^{\circ}C$. Avoid repeated freezing and thawing

Western blot:

Cystatin C protein



WB: Anti-Cystatin C pAb

Western blot analysis of recombinant full length Cystatin C protein.

Purified His-tagged Cystatin C protein(Cat. #10157) with anti-Cystatin C polyclonal anti.