

PDL1 MAB (DURVALUMAB)

Cat.#: 28145

Product Name: Anti-PDL1 (Durvalumab) Monoclonal Antibody

Synonyms: PD-L1;CD274;B7-H1;PDCD1L1;PDCD1LG1

Description: Anti-PDL1 (durvalumab) Monoclonal Antibody

Background: Research grade biosimilar. Not for use in therapeutic or diagnostic procedures for humans or animals.

Applications: Flow Cyt

Recommended Dilutions: Flow Cyt 1:100

Host Species: Humanized

Isotype: IgG1(K97R, L117F, L118E, P214S)

Purification: Purified from cell culture supernatant by affinity chromatography

Species Reactivity: Human PDL1

Constituents: Lyophilized from sterile PBS, pH 7.4. 5 % – 8% trehalose is added as protectants before lyophilization.

Storage & Shipping: Store at -20°C to -80°C for 12 months in lyophilized form. After reconstitution, if not intended for use within a month, aliquot and store at -80°C (Avoid repeated freezing and thawing).

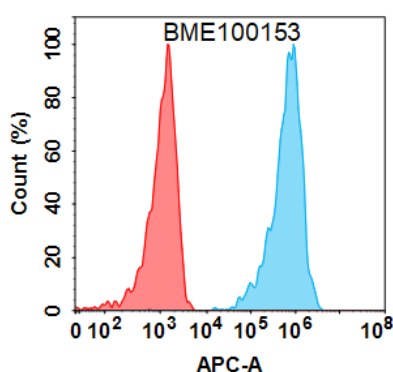


Figure 1. Flow cytometry analysis with 1 µg/mL Anti-PDL1(durvalumab biosimilar) mAb (28145) on Expi293 cells transfected with Human PDL1 protein (Blue histogram) or Expi293 transfected with irrelevant protein (Red histogram).

Anti-PDL1 (durvalumab biosimilar) mAb ELISA

0.2 µg of Human PDL1, mFc-His tagged protein per well

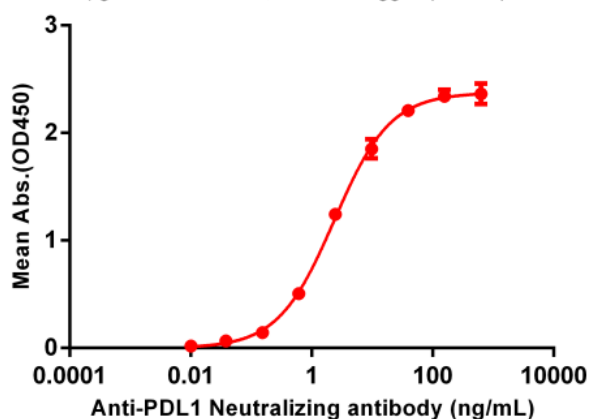


Figure 2. ELISA plate pre-coated by 2 µg/ml (100 µl/well) Human PDL1, mFc-His tagged protein 11151 can bind Anti-PDL1 (durvalumab biosimilar) Neutralizing antibody (28145) in a linear range of 0.61-9.77 ng/ml.