

EDA (DMC388) IGG1 CHIMERIC MAB

Cat.#: 28206

Product Name: Anti-EDA(DMC388) IgG1 Chimeric Monoclonal Antibody

Synonyms: ED1; EDA2

Description: Anti-EDA antibody(DMC388) IgG1 Chimeric Monoclonal Antibody

Background: The protein encoded by this gene is a type II membrane protein that can be cleaved by furin to produce a secreted form. The encoded protein; which belongs to the tumor necrosis factor family; acts as a homotrimer and may be involved in cell-cell signaling during the development of ectodermal organs. Defects in this gene are a cause of ectodermal dysplasia; anhidrotic; which is also known as X-linked hypohidrotic ectodermal dysplasia. Several transcript variants encoding many different isoforms have been found for this gene.

Applications: Flow Cyt

Recommended Dilutions: Flow Cyt 1:100

Host Species: Rabbit

Isotype: Rabbit:Human Fc chimeric IgG1

Purification: Purified from cell culture supernatant by affinity chromatography

Species Reactivity: Human EDA

Constituents: Lyophilized from sterile PBS, pH 7.4. 5 % – 8% trehalose is added as protectants before lyophilization.

Storage & Shipping: Store at -20°C to -80°C for 12 months in lyophilized form. After reconstitution, if not intended for use within a month, aliquot and store at -80°C (Avoid repeated freezing and thawing).

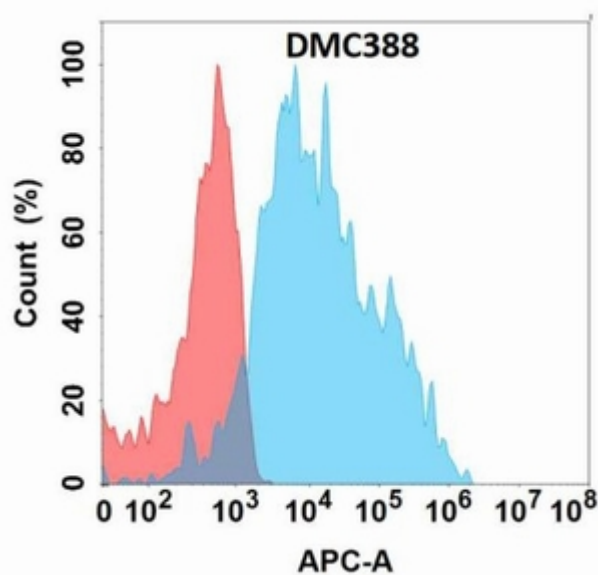


Figure 1. Flow cytometry analysis with Anti-EDA (DMC388) on Expi293 cells transfected with human EDA (Blue histogram) or Expi293 transfected with irrelevant protein (Red histogram).