

EGFR(D761Y)

EGFR(D761Y)

Cat. #: 26120

Gene Symbol: EGFR/HER1/ERBB1

Description: Anti-EGFR(D761Y) Mouse Monoclonal Antibody

Background: EGFR is a receptor tyrosine kinase binding ligands of the EGF family and activating several signaling cascades to convert extracellular cues into appropriate cellular responses. It activates at least 4 major downstream signaling cascades including the RAS-RAF-MEK-ERK, PI3 kinase-AKT, PLC gamma-PKC and STATs modules. Defects in EGFR are associated with lung cancer (LNCR).

Immunogen: A synthetic peptide from the internal region of EGFR which includes the mutation of D761Y, human origin.

Tested Applications: ELISA, WB, IF, IHC

Recommended Dilutions:

ELISA: 1:1000-1:5000

WB: 1:500-1:2000

IHC: 1:50-1:100

Concentration: 1 mg/ml

Host Species: Mouse

Format: Liquid

Clonality: Monoclonal

Isotype: IgG

Purity: Purified from ascites

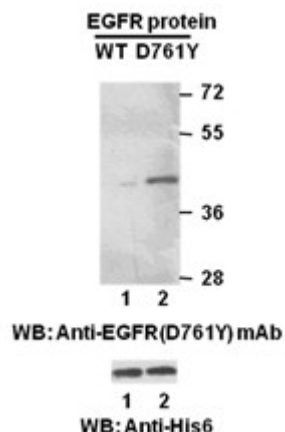
Preservative: No

Constituents: PBS (without Mg²⁺ and Ca²⁺), pH 7.4, 150 mM NaCl, 50% glycerol

Species Reactivity: Recognizes EGFR(D761Y), but not wild type EGFR from vertebrates.

Storage Conditions: Store at -20°C. Avoid repeated freezing and thawing.

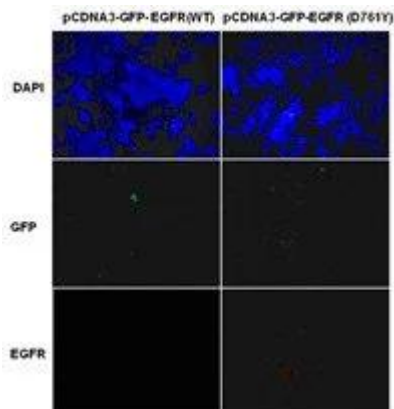
Western blot:



Western blot analysis of recombinant EGFR(D761Y) and wild type proteins.

Purified His-tagged EGFR(D761Y) protein (amino acids 702-987, lane 2, Cat. # 10240) and corresponding wild type protein (lane 1, Cat. #10210) were blotted with anti EGFR(D761Y) mouse monoclonal antibody (Cat. #26120). Proteins loading (bottom) were blotted with anti-His-tag monoclonal antibody (Cat. #28004).

Immunofluorescence:



Immunofluorescence of cells expressing EGFR proteins with anti-EGFR(D761Y) antibody.

HEK293T cells were transfected with pCDNA3-GFP-EGFR (WT) plasmid (left column) or pCDNA3-GFP-EGFR(D761Y) plasmid (right column), then fixed and stained with anti EGFR(D761Y) monoclonal antibody (Cat. #26120).