

## EGFR (DM130) RABBIT MAB

**Cat.#:** 28475

**Product Name:** Anti-EGFR(DM130) Rabbit Monoclonal Antibody

**Synonyms:** EGFR;ERBB;ERBB1;HER1;PIG61;mENA

**Description:** Anti-EGFR antibody(DM130) Rabbit Monoclonal Antibody

**Background:** The protein encoded by this gene is a transmembrane glycoprotein that is a member of the protein kinase superfamily. This protein is a receptor for members of the epidermal growth factor family. EGFR is a cell surface protein that binds to epidermal growth factor. Binding of the protein to a ligand induces receptor dimerization and tyrosine autophosphorylation and leads to cell proliferation. Mutations in this gene are associated with lung cancer.

**Applications:** ELISA; Flow Cyt

**Recommended Dilutions:** ELISA 1:5000-10000; Flow Cyt 1:100

**Host Species:** Rabbit

**Isotype:** Rabbit IgG

**Purification:** Purified from cell culture supernatant by affinity chromatography

**Species Reactivity:** Human EGFR

**Constituents:** Lyophilized from sterile PBS, pH 7.4. 5 % – 8% trehalose is added as protectants before lyophilization.

**Storage & Shipping:** Store at  $-20^{\circ}\text{C}$  to  $-80^{\circ}\text{C}$  for 12 months in lyophilized form. After reconstitution, if not intended for use within a month, aliquot and store at  $-80^{\circ}\text{C}$  (Avoid repeated freezing and thawing).

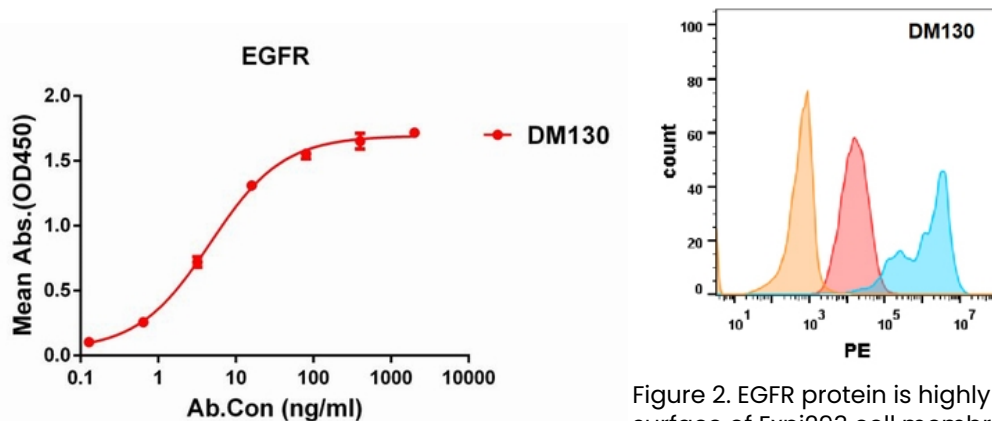


Figure 1. ELISA plate pre-coated by  $1\ \mu\text{g}/\text{ml}$  ( $100\ \mu\text{l}/\text{well}$ ) Human EGFR protein, His tagged protein 11218 can bind Rabbit anti-EGFR monoclonal antibody (clone: DM130) in a linear range of  $0.06\text{-}12\ \text{ng}/\text{ml}$ .

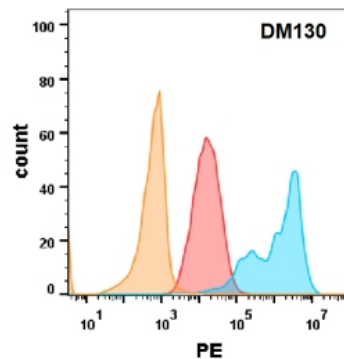


Figure 2. EGFR protein is highly expressed on the surface of Expi293 cell membrane. Flow cytometry analysis with Anti-EGFR (DM130) on Expi293 cells transfected with human EGFR (Blue histogram) or Expi293 transfected with irrelevant protein (Red histogram), and Isotype antibody on Expi293 transfected with irrelevant protein (Orange histogram)