

## EGFR(G719S)

### EGFR (G719S)

**Cat. #:** 26083

**Gene Symbol:** EGFR

**Description:** Anti-EGFR(G719S) Mouse Monoclonal Antibody

**Background:** EGFR is a receptor tyrosine kinase for ligands of the EGF family. EGFR activates several signaling cascades to convert extracellular cues into appropriate cellular responses. Defects in EGFR are associated with cancers such as lung cancer.

**Immunogen:** A synthetic peptide from the internal region of human EGFR which includes the mutation of G719S.

**Applications:** ELISA, WB, IHC, IF

**Recommended Dilutions:**

ELISA: 1:1000-1:5000

WB: 1:1000-1:2000

IHC: 1:50-1:1000

IF: 1:50-1:100

**Concentration:** 1 mg/ml

**Host Species:** Mouse

**Format:** Liquid

**Clonality:** Monoclonal

**Isotype:** IgG2b

**Purity:** Purified from ascites

**Preservative:** No

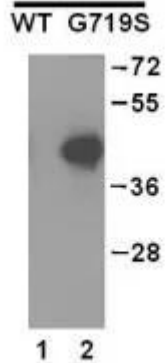
**Constituents:** PBS (without Mg<sup>2+</sup> and Ca<sup>2+</sup>), pH 7.4, 150 mM NaCl, 50% glycerol

**Species Reactivity:** Recognizes EGFR(G719S), but not wild type EGFR protein of vertebrates.

**Storage Conditions:** Store at -20°C. Avoid repeated freezing and thawing.

### Western blot:

## EGFR proteins

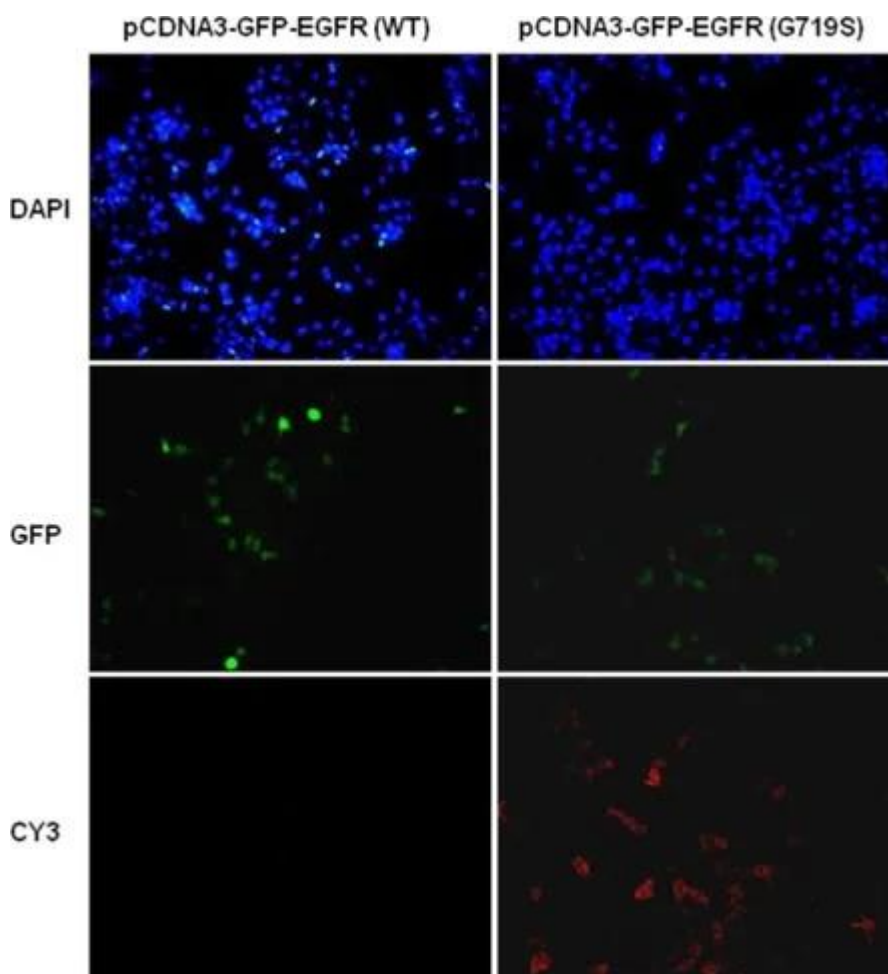


WB: Anti-EGFR(G719S) mAb

### Western blot analysis of recombinant EGFR(G719S) and wild type EGFR proteins.

Purified his-tagged EGFR (G719S) protein (aa 702-987) (Cat. #10214) and wild type EGFR protein (aa 702-987) (Cat. #10210) were blotted with anti-EGFR(G719S) mouse antibody (Cat. #26083).

### Immunofluorescence:



### Immunofluorescence of cells expressing EGFR proteins with anti-EGFR (G719S)

## **antibody.**

HEK293T cells were transfected with pCDNA3-GFP-EGFR (WT) plasmid (left column) or pCDNA3-GFP-EGFR (G719S) plasmid (right column), then fixed and stained with anti- EGFR (G719S) monoclonal antibody (Cat. #26083).