

EGFR (L747-P753)S**EGFR (L747-P753)S****Cat. #:** 26287**Gene Symbol:** EGFR/HER1/ERBB1**Description:** Anti-EGFR(L747-P753)S Mouse Monoclonal Antibody**Background:** EGFR is a receptor tyrosine kinase binding ligands of the EGF family and activating several signaling cascades to convert extracellular cues into appropriate cellular responses. It activates at least 4 major downstream signaling cascades including the RAS-RAF-MEK-ERK, PI3 kinase-AKT, PLCgamma-PKC and STATs modules. Defects in EGFR are associated with lung cancer (LNCR).**Immunogen:** A synthetic peptide from the internal region of EGFR which includes the mutation of (L747-P753) S, human origin.**Applications:** ELISA, WB, IF, IHC**Recommended Dilutions:**

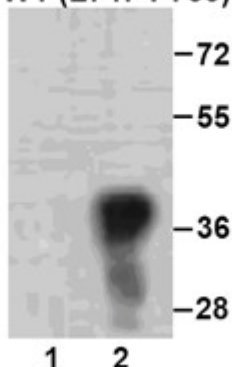
ELISA: 1:1000-1:5000

WB: 1:500-1:1000

IHC: 1:50-1:100

Concentration: 1 mg/ml**Host Species:** Mouse**Format:** Liquid**Clonality:** Monoclonal**Isotype:****Purity:** Purified from ascites**Preservative:** No**Constituents:** PBS (without Mg²⁺ and Ca²⁺), pH 7.4, 150 mM NaCl, 50% glycerol**Species Reactivity:** Recognizes EGFR(L747-P753)S, but not wild type EGFR protein from vertebrates.**Storage Conditions:** Store at -20°C. Avoid repeated freezing and thawing**Western blot:**

EGFR protein WT (L747-P753) S

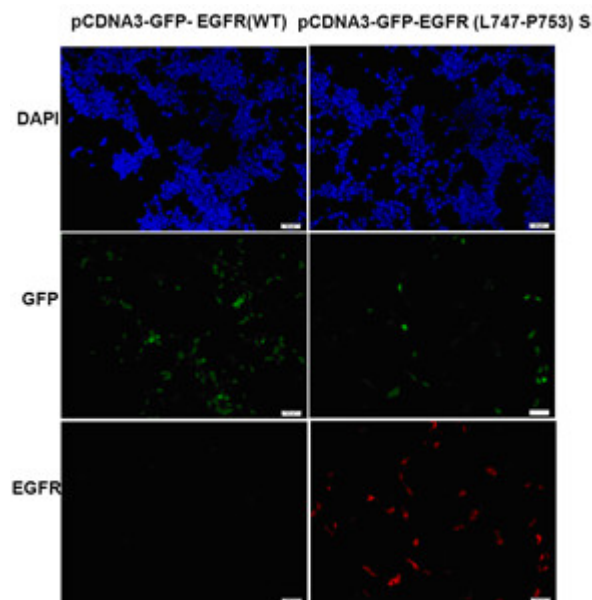


WB: Anti- EGFR (L747-P753) S mAb

Western blot analysis of recombinant EGFR(L747-P753) S and wild type proteins.

Purified His-tagged EGFR(L747-P753)S protein (702-987) and wild type protein (702-987) were blotted with anti- EGFR(L747-P753)S mouse antibody (Cat. #26287).

Immunofluorescence:



Immunofluorescence of cells expressing EGFR proteins with anti-EGFR(L747-P753)S antibody.

HEK293T cells were transfected with pCDNA3-GFP-EGFR (WT) plasmid (left column) or pCDNA3-GFP-EGFR(L747-P753)S plasmid (right column), then fixed and stained with anti- EGFR(L747-P753)S monoclonal antibody (Cat. #26287).

