

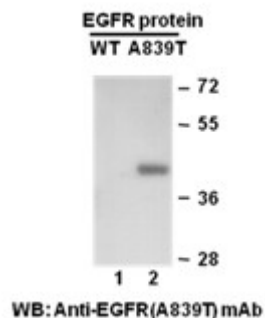
**EGFR(A839T)****EGFR(A839T)****Cat. #:** 26117**Gene Symbol:** EGFR/HER1/ERBB1**Description:** Anti-EGFR(A839T) Mouse Monoclonal Antibody**Background:** EGFR is a receptor tyrosine kinase binding ligands of the EGF family and activating several signaling cascades to convert extracellular cues into appropriate cellular responses. It activates at least 4 major downstream signaling cascades including the RAS-RAF-MEK-ERK, PI3 kinase-AKT, PLC gamma-PKC and STATs modules. Defects in EGFR are associated with lung cancer (LNCr).**Immunogen:** A synthetic peptide from the internal region of EGFR which includes the mutation of A839T, human origin.**Tested Applications:** ELISA, WB, IF, IHC**Recommended Dilutions:**

ELISA: 1:1000-1:5000

WB: 1:500-1:1000

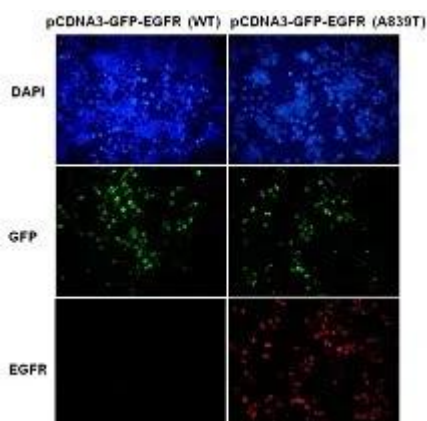
IHC: 1:50-1:100

**Concentration:** 1 mg/ml**Host Species:** Mouse**Format:** Liquid**Clonality:** Monoclonal**Isotype:****Purity:** Purified from ascites**Preservative:** No**Constituents:** PBS (without Mg<sup>2+</sup> and Ca<sup>2+</sup>), pH 7.4, 150 mM NaCl, 50% glycerol**Species Reactivity:** Recognizes EGFR(A839T), but not wild type EGFR of vertebrates.**Storage Conditions:** Store at -20°C. Avoid repeated freezing and thawing.**Western blot:**



## Western blot analysis of recombinant EGFR(A839T) and wild type proteins.

Purified His-tagged EGFR(A839T) protein (702-987) (Cat. #10221) and wild type protein (702-987) (Cat. #10210) were blotted with anti EGFR(A839T) mouse antibody (Cat. #26117).



## Immunofluorescence of cells expressing EGFR proteins with anti EGFR(A839T) antibody.

HEK293T cells were transfected with pCDNA3-GFP-EGFR (WT) plasmid (left column) or pCDNA3-GFP EGFR(A839T) plasmid (right column), then fixed and stained with anti- EGFR(A839T) monoclonal antibody (Cat. #26117).