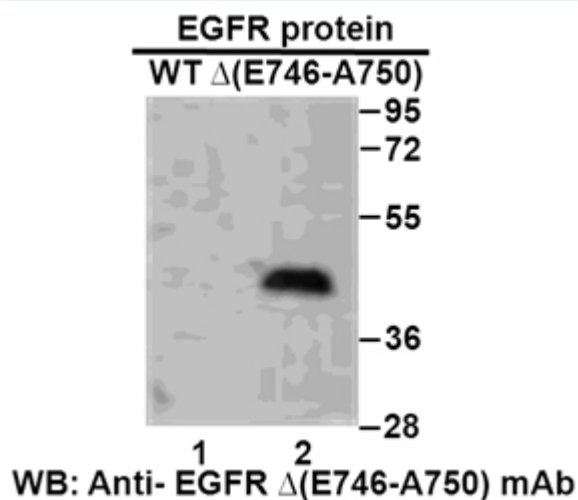


**EGFR(E746-A750)DEL****EGFR(E746-A750)del****Cat. #:** 26235**Gene Symbol:** EGFR/HER1/ERBB1**Description:** Anti-EGFR(E746-A750)del Mouse Monoclonal Antibody**Background:** EGFR is a receptor tyrosine kinase binding ligands of the EGF family and activating several signaling cascades to convert extracellular cues into appropriate cellular responses. It activates at least 4 major downstream signaling cascades including the RAS-RAF-MEK-ERK, PI3 kinase-AKT, PLCgamma-PKC and STATs modules. Defects in EGFR are associated with lung cancer (LNCR).**Immunogen:** A synthetic peptide from the internal region of EGFR which includes the deletion of E746-A750, human origin.**Applications:** ELISA, WB**Recommended Dilutions:**

ELISA: 1:1000-1:5000

WB: 1:500-1:1000

**Concentration:** 1 mg/ml**Host Species:** Mouse**Format:** Liquid**Clonality:** Monoclonal**Isotype:****Purity:** Purified from ascites**Preservative:** No**Constituents:** PBS (without Mg<sup>2+</sup> and Ca<sup>2+</sup>), pH 7.4, 150 mM NaCl, 50% glycerol**Species Reactivity:** Recognizes EGFR(E746-A750), but not wild type EGFR of vertebrates.**Storage Conditions:** Store at -20°C. Avoid freeze/thaw cycles**Western blot:**



## Western blot analysis of recombinant EGFR(E746-A750) and wild type proteins.

Purified His-tagged EGFR(E746-A750)del protein (aa 702-987) and wild type protein (aa 702-987) were blotted with anti- EGFR(E746-A750)del mouse antibody (Cat. #26235).