

EGFR(G719A)**EGFR(G719A)****Cat. #:** 26115**Gene Symbol:** EGFR/HER1/ERBB1**Description:** Anti-EGFR(G719A) Mouse Monoclonal Antibody**Background:** EGFR is a receptor tyrosine kinase binding ligands of the EGF family and activating several signaling cascades to convert extracellular cues into appropriate cellular responses. It activates at least 4 major downstream signaling cascades including the RAS-RAF-MEK-ERK, PI3 kinase-AKT, PLC gamma-PKC and STATs modules. Defects in EGFR are associated with lung cancer (LNCr).**Immunogen:** A synthetic peptide from the internal region of EGFR which includes the mutation of G719A, human origin.**Tested Applications:** ELISA, WB, IF, IHC**Recommended Dilutions:**

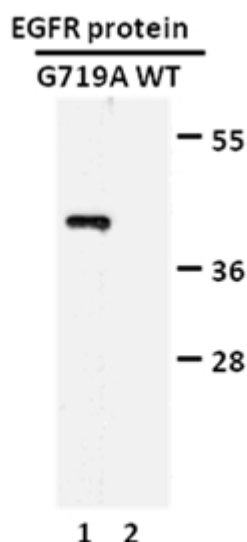
ELISA: 1:1000-1:5000

WB: 1:500-1:1000

IHC: 1:50-1:100

Concentration: 1 mg/ml**Host Species:** Mouse**Format:** Liquid**Clonality:** Monoclonal**Isotype:****Purity:** Purified from ascites**Preservative:** No**Constituents:** PBS (without Mg^{2+} and Ca^{2+}), pH 7.4, 150 mM NaCl, 50% glycerol**Species Reactivity:** Recognizes EGFR(G719A), but not wild type EGFR of vertebrates.**Storage Conditions:** Store at $-20^{\circ}C$. Avoid repeated freezing and thawing.

Western blot:



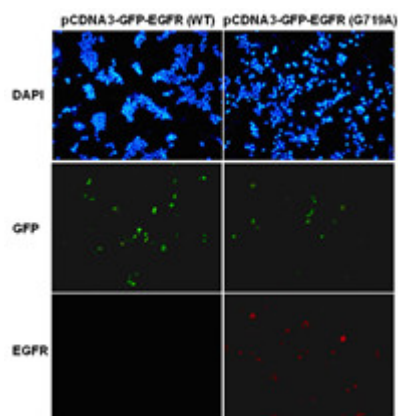
WB: Anti-EGFR (G719A) mAb

Western blot analysis of recombinant

EGFR(G719A) and wild type proteins.

Purified His-tagged EGFR(G719A) protein (aa 702-987) and wild type protein (aa 702-987) were blotted with anti- EGFR(G719A) mouse antibody (cat. # 26115).

Immunofluorescence:



Immunofluorescence of cells expressing EGFR proteins with anti-EGFR(G719A) antibody.

HEK293T cells were transfected with pCDNA3-GFP-EGFR (WT) plasmid (left column) or pCDNA3-GFP-EGFR(G719A) plasmid (right column), then fixed and stained with anti-EGFR (G719A) monoclonal antibody (cat. # 26115).