

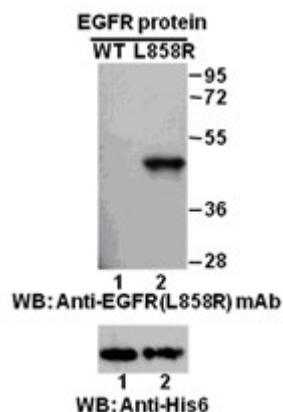
EGFR(L858R)**EGFR(L858R)****Cat. #:** 26082**Gene Symbol:** EGFR/HER1/ERBB1**Description:** Anti-EGFR(L858R) Mouse Monoclonal Antibody**Background:** EGFR is a receptor tyrosine kinase binding ligands of the EGF family and activating several signaling cascades to convert extracellular cues into appropriate cellular responses. It activates at least 4 major downstream signaling cascades including the RAS-RAF-MEK-ERK, PI3 kinase-AKT, PLC gamma-PKC and STATs modules. Defects in EGFR are associated with lung cancer (LNCr).**Immunogen:** A synthetic peptide from the internal region of EGFR which includes the mutation of L858R, human origin.**Applications:** ELISA, WB, IF, IHC**Recommended Dilutions:**

ELISA: 1:1000-1:5000

WB: 1:1000-1:5000

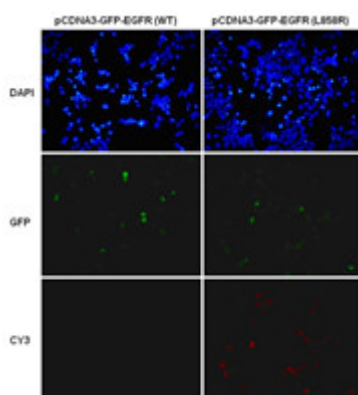
IHC: 1:50-1:100

Concentration: 1 mg/ml**Host Species:** Mouse**Format:** Liquid**Clonality:** Monoclonal**Isotype:** IgG1**Purity:** Purified from ascites**Preservative:** No**Constituents:** PBS (without Mg^{2+} and Ca^{2+}), pH 7.4, 150 mM NaCl, 50% glycerol**Species Reactivity:** Recognizes EGFR(L858R), but not wild type EGFR from vertebrates.**Storage Conditions:** Store at -20°C. Avoid repeated freezing and thawing.**Western blot:**



Western blot analysis of recombinant EGFR(L858R) and wild type proteins. Purified His-tagged EGFR(L858R) protein (amino acid 702-987, lane 2, Cat. # 10230) and corresponding wild type protein (amino acid 702-987, lane 1, Cat. # 10210) were blotted with anti EGFR(L858R) mouse monoclonal antibody (Cat. # 26082) . Proteins loading (bottom) were blotted with anti-His-tag monoclonal antibody (Cat. # 28004).

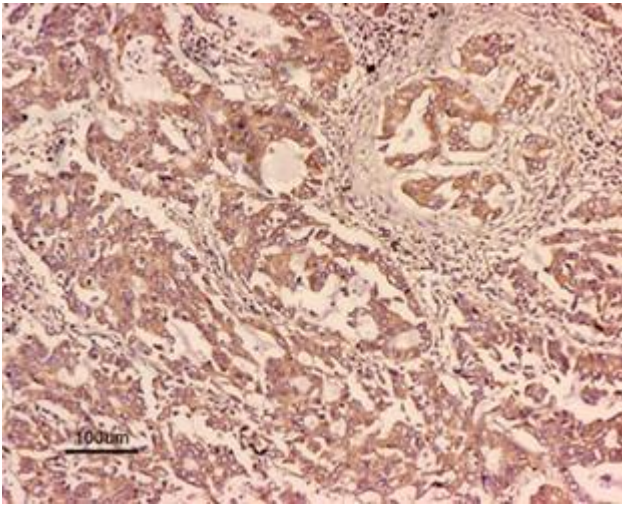
Immunofluorescence:



Immunofluorescence of cells expressing EGFR proteins with anti EGFR(L858R) antibody.

HEK293T cells were transfected with pCDNA3-GFP-EGFR (WT) plasmid (left column) or pCDNA3-GFP-EGFR L858R) plasmid (right column), then fixed and stained with anti- EGFR(L858R) monoclonal antibody (Cat. # 26082).

Immunohistochemistry:



Immunohistochemical analysis of paraffin-embedded human NSCLC tissue with anti-EGFR(L858R) monoclonal antibody (Cat. #26082).

Tissue samples were fixed with formaldehyde and blocked with 1% serum for 15 min at 37 °C. Antigen retrieval was by heat mediation in citrate buffer (pH6). Samples were then incubated with primary antibody (1:400) overnight at 4°C. A HRP-conjugated Goat anti-mouse IgG (dilution 1:100) was used as secondary antibody.