

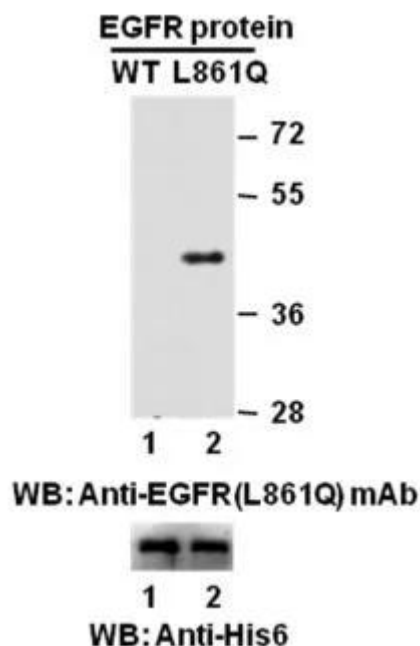
EGFR(L861Q)**EGFR(L861Q)****Cat. #:** 26077**Gene Symbol:** EGFR/HER1/ERBB1**Description:** Anti-EGFR(L861Q) Mouse Monoclonal Antibody**Background:** EGFR is a receptor tyrosine kinase binding ligands of the EGF family and activating several signaling cascades to convert extracellular cues into appropriate cellular responses. It activates at least 4 major downstream signaling cascades including the RAS-RAF-MEK-ERK, PI3 kinase-AKT, PLC gamma-PKC and STATs modules. Defects in EGFR are associated with lung cancer (LNCR).**Immunogen:** A synthetic peptide from the internal region of EGFR which includes the mutation of L861Q, human origin.**Tested Applications:** ELISA, WB, IF, IHC**Recommended Dilutions:**

ELISA: 1:1000-1:5000

WB: 1:1000-1:5000

IHC: 1:50-1:200

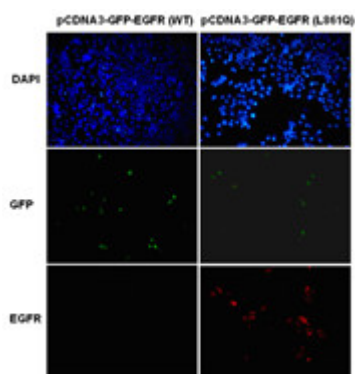
Concentration: 1 mg/ml**Host Species:** Mouse**Format:** Liquid**Clonality:** Monoclonal**Isotype:****Purity:** Purified from ascites**Preservative:** No**Constituents:** PBS (without Mg^{2+} and Ca^{2+}), pH 7.4, 150 mM NaCl, 50% glycerol**Species Reactivity:** Recognizes EGFR(L861Q), but not wild type EGFR from vertebrates.**Storage Conditions:** Store at $-20^{\circ}C$. Avoid repeated freezing and thawing.**Western blot:**



Western blot analysis of recombinant EGFR(L861Q) and wild type proteins.

Purified His-tagged EGFR(L861Q) protein (amino acids 702-987, lane 2, Cat. # 10211) and corresponding wild type protein (lane 1, Cat. # 10210) were blotted with anti-EGFR(L861Q) mouse monoclonal antibody (Cat. # 26077). Proteins loading (bottom) were blotted with anti-His-tag monoclonal antibody (Cat. #28004).

Immunofluorescence:



Immunofluorescence of cells expressing EGFR proteins with anti-EGFR(L861Q) antibody.

HEK293T cells were transfected with pCDNA3-GFP-EGFR (WT) plasmid (left column) or pCDNA3-GFP-EGFR(L861Q) plasmid (right column), then fixed and stained with anti-EGFR(L861Q) monoclonal antibody (Cat. #26077).

