

EGFR(N826S)

EGFR(N826S)

Cat. #: 26116

Gene Symbol: EGFR/Her1/Neu

Description: Anti-EGFR(N826S) Mouse Monoclonal Antibody

Background: EGFR is a receptor tyrosine kinase binding ligands of the EGF family and activating several signaling cascades to convert extracellular cues into appropriate cellular responses. It activates at least 4 major downstream signaling cascades including the RAS-RAF-MEK-ERK, PI3 kinase-AKT, PLCgamma-PKC and STATs modules. Defects in EGFR are associated with lung cancer (LNCR).

Immunogen: A synthetic peptide from the internal region of EGFR which includes the mutation of N826S, human origin.

Applications: ELISA, WB, IF, IHC

Recommended Dilutions:

ELISA: 1:1000-1:5000

WB: 1:500-1:2000

IHC: 1:50-1:100

Concentration: 1 mg/ml

Host Species: Mouse

Format: Liquid

Clonality: Monoclonal

Isotype:

Purity: Purified from ascites

Preservative: No

Constituents: PBS (without Mg²⁺ and Ca²⁺), pH 7.4, 150 mM NaCl, 50% glycerol

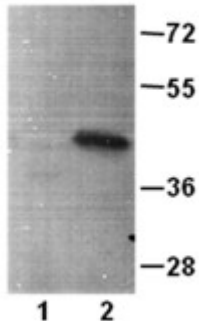
Species Reactivity: Recognizes EGFR(N826S), but not wild type EGFR protein from vertebrates.

Storage Conditions: Store at -20°C. Avoid repeated freezing and thawing.

Western blot:

EGFR protein

WT N826S

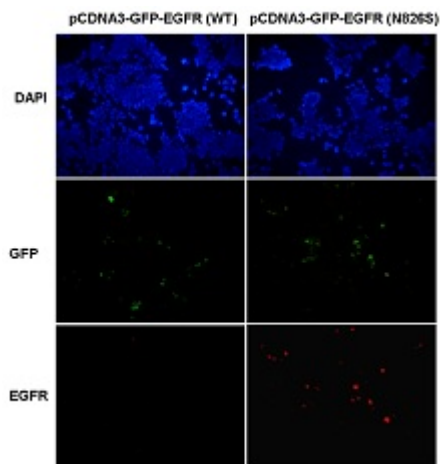


WB: Anti-EGFR (N826S) mAb

Western blot analysis of recombinant EGFR(N826S) and wild type proteins.

Purified His-tagged EGFR(N826S) protein (702-987) (Cat. #10221) and corresponding wild type protein (702-987) (Cat. #10210) were blotted with anti-EGFR (N826S) mouse antibody (Cat. #26116).

Immunofluorescence:



Immunofluorescence of cells expressing EGFR proteins with Anti-EGFR(N826S) antibody.

HEK293T cells were transfected with pCDNA3-GFP-EGFR (WT) plasmid (left column) or pCDNA3-GFP-EGFR(N826S) plasmid (right column), then fixed and stained with anti-EGFR(N826S) monoclonal antibody (Cat. #26116).