

## EGFR(S768I)

### EGFR(S768I)

**Cat. #:** 26483

**Gene Symbol:** EGFR/HER1/ERBB1

**Description:** Anti-EGFR(S768I) Mouse Monoclonal Antibody

**Background:** EGFR is a receptor tyrosine kinase binding ligands of the EGF family and activating several signaling cascades to convert extracellular cues into appropriate cellular responses. It activates at least 4 major downstream signaling cascades including the RAS-RAF-MEK-ERK, PI3 kinase-AKT, PLCgamma-PKC and STATs modules. Defects in EGFR are associated with lung cancer (LNCR).

**Immunogen:** A synthetic peptide from the internal region of EGFR which includes the mutation of S768I, human origin.

**Applications:** ELISA, WB, IF, IHC

**Recommended Dilutions:**

ELISA: 1:1000-1:5000

WB: 1:1000-1:5000

IHC: 1:50-1:200

**Concentration:** 1 mg/ml

**Host Species:** Mouse

**Format:** Liquid

**Clonality:** Monoclonal

**Isotype:**

**Purity:** Purified from ascites

**Preservative:** No

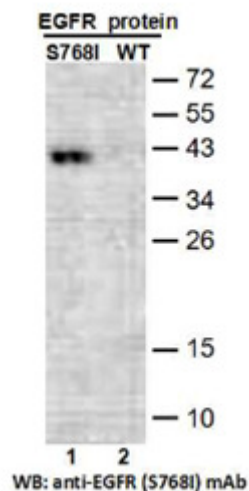
**Constituents:** PBS (without Mg<sup>2+</sup> and Ca<sup>2+</sup>), pH 7.4, 150 mM NaCl, 50% glycerol

**Species Reactivity:** Recognizes EGFR (S768I), but not wild type EGFR from vertebrates.

**Storage Conditions:** Store at -20°C. Avoid repeated freezing and thawing

### Western blot:

## Western blot:

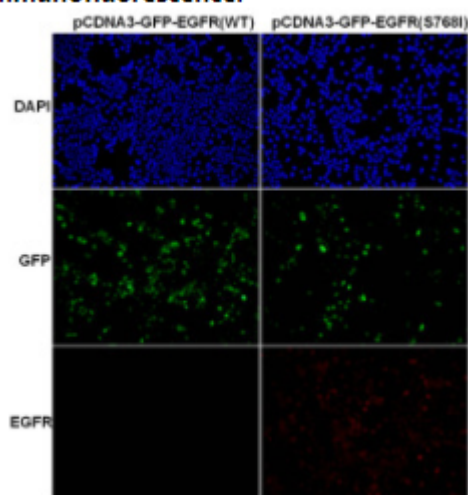


## Western blot analysis of recombinant EGFR (S768I) and wild type proteins.

Purified His-tagged EGFR (S768I) protein (lane 1) and corresponding wild type protein (amino acids 702–987, lane 2) were blotted with anti EGFR(S768I) mouse monoclonal antibody (Cat. #26483).

## Immunofluorescence:

### Immunofluorescence:



## Immunofluorescence of cells expressing EGFR proteins with anti EGFR(S768I) antibody.

HEK293T cells were transfected with pCDNA3-GFP-EGFR (WT) plasmid (left column) or pCDNA3-GFP EGFR(S768I) plasmid (right column), then fixed and stained with anti- EGFR (S768I) monoclonal antibody (Cat. #26483).



# Product Description

Pioneering GTPase and Oncogene Product Development since 2010

---