

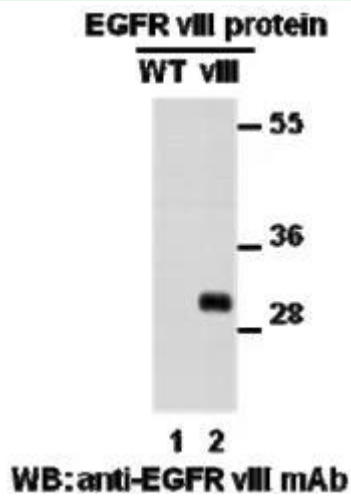
EGFR(VIII)**EGFR(vIII)****Cat. #:** 26176**Gene Symbol:** EGFR/HER1/ERBB1**Description:** Anti-EGFR(vIII) Mouse Monoclonal Antibody**Background:** EGFR is a receptor tyrosine kinase binding ligands of the EGF family and activating several signaling cascades to convert extracellular cues into appropriate cellular responses. It activates at least 4 major downstream signaling cascades including the RAS-RAF-MEK-ERK, PI3 kinase-AKT, PLC gamma-PKC and STATs modules. Defects in EGFR are associated with lung cancer (NSCLC).**Immunogen:** A synthetic peptide from the internal region of EGFR which includes the mutation of vIII, human origin.**Applications:** ELISA, WB, IF, IHC**Recommended Dilutions:**

ELISA: 1:1000-1:5000

WB: 1:1000-1:5000

IHC: 1:50-1:100

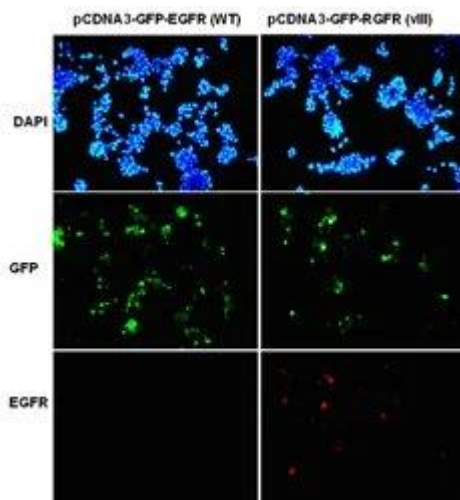
Concentration: 1 mg/ml**Host Species:** Mouse**Format:** Liquid**Clonality:** Monoclonal**Isotype:****Purity:** Purified from ascites**Preservative:** No**Constituents:** PBS (without Mg²⁺ and Ca²⁺), pH 7.4, 150 mM NaCl, 50% glycerol**Species Reactivity:** Recognizes EGFR(vIII), but not wild type EGFR from vertebrates.**Storage Conditions:** Store at -20°C. Avoid repeated freezing and thawing**Western blot:**



Western blot analysis of recombinant EGFR(vIII) and wild type proteins.

Purified His-tagged EGFR(vIII) protein (partial, lane 2) and corresponding wild type protein (lane 1) were blotted with anti-EGFR(vIII) mouse monoclonal antibody (Cat. # 26176).

Immunofluorescence:



Immunofluorescence of cells expressing EGFR proteins with anti-EGFR(vIII) antibody. HEK293T cells were transfected with pCDNA3-GFP-EGFR (WT) plasmid (left column) or pCDNA3-GFP-EGFR(vIII) plasmid (right column), then fixed and stained with anti-EGFR(vIII) monoclonal antibody (Cat. #26176).