

CXCL10 MAB (ELDELUMAB)

Cat.#: 28128

Product Name: Anti-CXCL10(Eldelumab) Monoclonal Antibody

Synonyms: Gamma-IP10;IP-10;SCYB10;INP10

Description: Anti-CXCL10(eldelumab) Monoclonal Antibody

Background: Research grade biosimilar. Not for use in therapeutic or diagnostic procedures for humans or animals.

Applications: ELISA; Flow Cyt

Recommended Dilutions: ELISA 1:5000-10000; Flow Cyt 1:100

Host Species: Homo sapiens

Isotype: IgG1

Purification: Purified from cell culture supernatant by affinity chromatography

Species Reactivity: Human CXCL10

Constituents: Lyophilized from sterile PBS, pH 7.4. 5 % – 8% trehalose is added as protectants before lyophilization.

Storage & Shipping: Store at -20°C to -80°C for 12 months in lyophilized form. After reconstitution, if not intended for use within a month, aliquot and store at -80°C (Avoid repeated freezing and thawing).

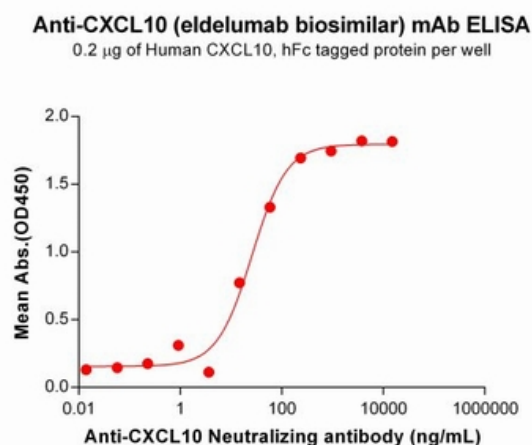


Figure 1. ELISA plate pre-coated by 2 µg/mL (100 µl/well) Human CXCL10 Protein, hFc Tag (PME101121) can bind Anti-CXCL10 Neutralizing antibody (28128) in a linear range of 3.66-234.38 ng/mL. In order to specifically detect 28128, mouse anti-human Fab-specific antibody was used as detection antibody.

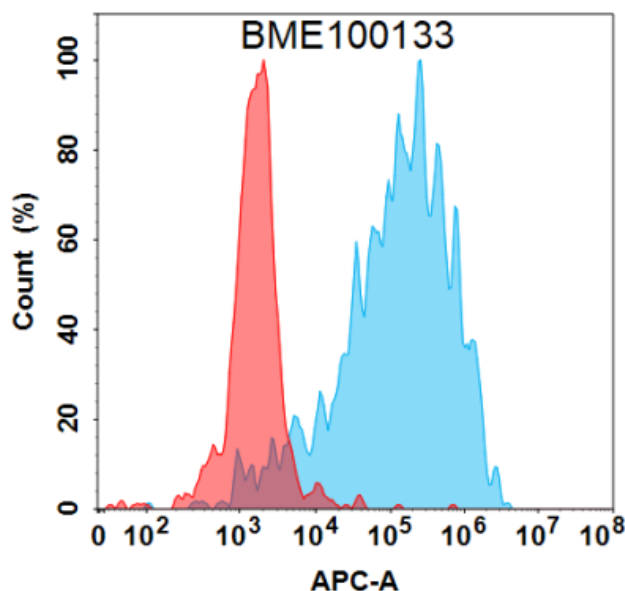


Figure 2. Flow cytometry analysis under cell membrane permeable condition with 1 µg/mL Anti-CXCL10 (eldelumab biosimilar) mAb (28128) on Expi293 cells transfected with Human CXCL10 protein (Blue histogram) or Expi293 transfected with irrelevant protein (Red histogram).

