

CS1 MAB (ELOTUZUMAB)

Cat.#: 28011

Product Name: Anti-CS1 (Elotuzumab) Monoclonal Antibody

Synonyms: CS1;CD319;SLAMF7;CRACC

Description: Anti-CS1 (elotuzumab) Monoclonal Antibody

Background: Research grade biosimilar. Not for use in therapeutic or diagnostic procedures for humans or animals.

Applications: ELISA; Flow Cyt

Recommended Dilutions: ELISA 1:5000–10000; Flow Cyt 1:100

Host Species: Humanized

Isotype: IgG1

Purification: Purified from cell culture supernatant by affinity chromatography

Species Reactivity: Human CS1

Constituents: Lyophilized from sterile PBS, pH 7.4. 5 % – 8% trehalose is added as protectants before lyophilization.

Storage & Shipping: Store at -20°C to -80°C for 12 months in lyophilized form. After reconstitution, if not intended for use within a month, aliquot and store at -80°C (Avoid repeated freezing and thawing).

Anti-CS1 (elotuzumab biosimilar) mAb ELISA

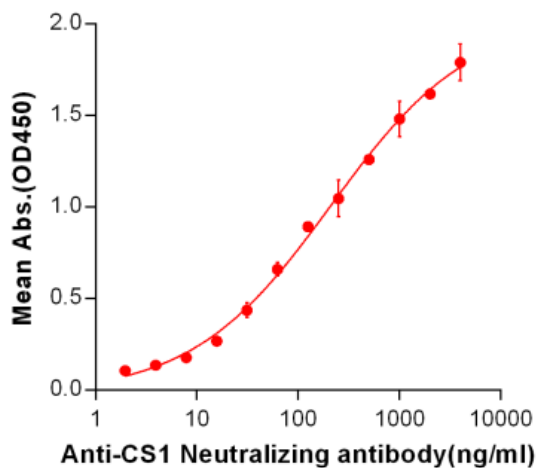


Figure 1. ELISA plate pre-coated by 2 µg/ml (100 µl/well) Human CS1, hFc-His tagged protein (11130) can bind Anti-CS1 Neutralizing antibody in a linear range of 7.81–210.7 ng/ml. In order to specifically detect 28011, mouse anti-human Fab-specific antibody was used as detection antibody.

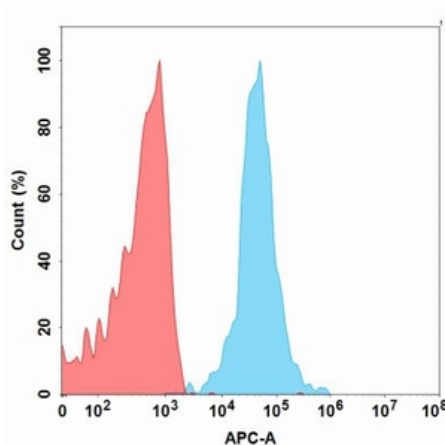


Figure 2. Flow cytometry analysis with 15 µg/mL Anti-CS1 (elotuzumab) mAb (28011) on Expi293 cells transfected with Human CS1 protein (Blue histogram) or Expi293 transfected with irrelevant protein (Red histogram).