

EPCAM (DM147) RABBIT MAB

Cat.#: 28491

Product Name: Anti-EPCAM(DM147) Rabbit Monoclonal Antibody

Synonyms: EPCAM;TACSTD1;TROPI;CD326;DIAR5;EGP2;EGP314;EGP40;ESA;GA733-2;HNPCC8;HNPCC-8;KSI:4;KSA;M4S1;MIC18;MK1

Description: Anti-EPCAM antibody(DM147) Rabbit Monoclonal Antibody

Background: This gene encodes a carcinoma-associated antigen and is a member of a family that includes at least two type I membrane proteins. This antigen is expressed on most normal epithelial cells and gastrointestinal carcinomas and functions as a homotypic calcium-independent cell adhesion molecule. The antigen is being used as a target for immunotherapy treatment of human carcinomas. Mutations in this gene result in congenital tufting enteropathy.

Applications: ELISA; Flow Cyt

Recommended Dilutions: ELISA 1:5000-10000; Flow Cyt 1:100

Host Species: Rabbit

Isotype: Rabbit IgG

Purification: Purified from cell culture supernatant by affinity chromatography

Species Reactivity: Human EPCAM

Constituents: Lyophilized from sterile PBS, pH 7.4. 5 % – 8% trehalose is added as protectants before lyophilization.

Storage & Shipping: Store at -20°C to -80°C for 12 months in lyophilized form. After reconstitution, if not intended for use within a month, aliquot and store at -80°C (Avoid repeated freezing and thawing).

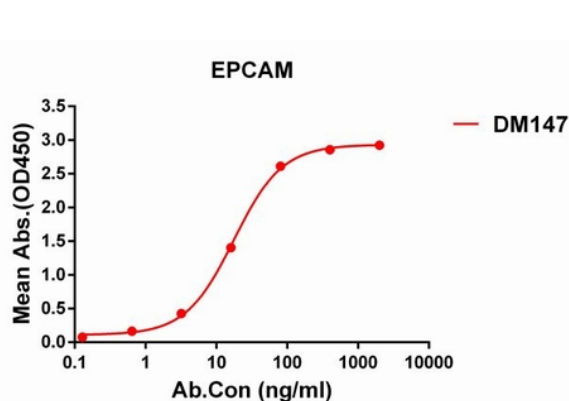


Figure 1. ELISA plate pre-coated by 1 µg/ml (100 µl/well) Human EPCAM protein, His tagged protein 11191 can bind Rabbit anti-EPCAM monoclonal antibody (clone: DM147) in a linear range of 5-100 ng/ml.

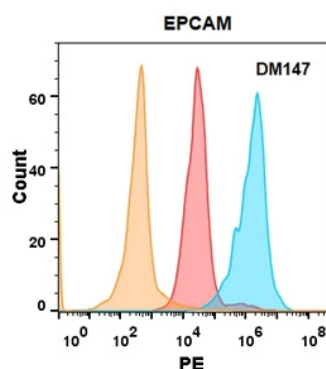


Figure 2. EPCAM protein is highly expressed on the surface of Expi293 cell membrane. Flow cytometry analysis with Anti-EPCAM (DM147) on Expi293 cells transfected with human EPCAM (Blue histogram) or Expi293 transfected with irrelevant protein (Red histogram), and Isotype antibody on Expi293 transfected with irrelevant protein (Orange histogram).