

## ERBB2(D769H)

### ERBB2(D769H)

**Cat. #: 26381**

**Gene Symbol: ERBB2/HER2/Neu/c-Neu**

**Description: Anti-ERBB2(D769H) Mouse Monoclonal Antibody**

**Background: The HER-2/neu oncogene, a member of the epidermal growth factor receptor or erb-B gene-like family, encodes a transmembrane tyrosine kinase receptor that mediates extracellular signals activated by epidermal growth factors. Her2 abnormal has been strongly associated with many malignant tumors, especially with breast cancers. The expression level of Her2 is an important criteria in clinic evaluating of the progression of breast cancer.**

**Immunogen: A synthetic peptide from the internal region of ERBB2 which includes the mutation of D769H, human origin.**

**Applications: ELISA, WB, IHC**

**Recommended Dilutions:**

**ELISA: 1:1000-1:2000**

**WB: 1:500-1:1000**

**IF: 1:25-1:50**

**Concentration: 1 mg/ml**

**Host Species: Mouse**

**Format: Liquid**

**Clonality: Monoclonal**

**Isotype: IgG**

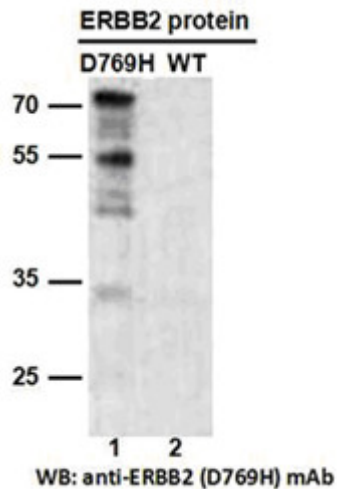
**Purity: Purified from ascites**

**Preservative: No**

**Constituents: PBS (without Mg<sup>2+</sup> and Ca<sup>2+</sup>), pH 7.4, 150 mM NaCl, 50% glycerol**

**Species Reactivity: Recognizes D769H mutant, but not wild type ERBB2 of vertebrates.**

**Storage Conditions: Store at -20°C. Avoid repeated freezing and thawing**

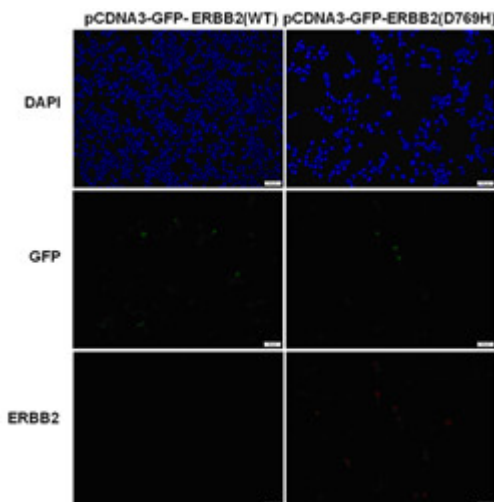


### Western blot:

Western blot analysis of recombinant ERBB2(D769H) and wild type proteins.

Purified His-tagged ERBB2(D769H) protein (lane 1) and corresponding wild type protein (lane 2) were blotted with Anti-ERBB2(D769H) monoclonal antibody (Cat. #26381).

### Immunofluorescence:



### Immunofluorescence of cells expressing ERBB2 proteins with Anti-ERBB2(D769H) antibody.

HEK293T cells were transfected with pCDNA3-GFP-ERBB2 (WT) plasmid (left column) or pCDNA3-GFP-ERBB2(D769H) plasmid (right column), then fixed and stained with Anti-ERBB2(D769H) monoclonal antibody (Cat. #26381).