

## EREG (DMC424) IGG1 CHIMERIC MAB

**Cat.#:** 28218

**Product Name:** Anti-EREG(DMC424) IgG1 Chimeric Monoclonal Antibody

**Synonyms:** Ep; EPR; ER

**Description:** Anti-EREG antibody(DMC424) IgG1 Chimeric Monoclonal Antibody

**Background:** This gene encodes a secreted peptide hormone and member of the epidermal growth factor (EGF) family of proteins. The encoded protein is a ligand of the epidermal growth factor receptor (EGFR) and the structurally related erb-b2 receptor tyrosine kinase 4 (ERBB4). The encoded protein may be involved in a wide range of biological processes including inflammation; wound healing; oocyte maturation; and cell proliferation. Additionally; the encoded protein may promote the progression of cancers of various human tissues.

**Applications:** Flow Cyt

**Recommended Dilutions:** Flow Cyt 1:100

**Host Species:** Rabbit

**Isotype:** Rabbit:Human Fc chimeric IgG1

**Purification:** Purified from cell culture supernatant by affinity chromatography

**Species Reactivity:** Human EREG

**Constituents:** Lyophilized from sterile PBS, pH 7.4. 5 % – 8% trehalose is added as protectants before lyophilization.

**Storage & Shipping:** Store at -20°C to -80°C for 12 months in lyophilized form. After reconstitution, if not intended for use within a month, aliquot and store at -80°C (Avoid repeated freezing and thawing).

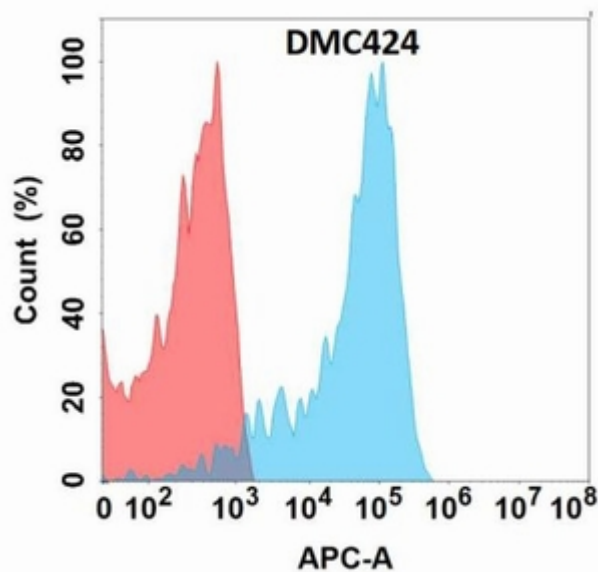


Figure 1. Flow cytometry analysis with Anti-EREG (DMC424) on Expi293 cells transfected with human EREG (Blue histogram) or Expi293 transfected with irrelevant protein (Red histogram).