

## FAP (DM154) RABBIT MAB

**Cat.#:** 28498

**Product Name:** Anti-FAP(DM154) Rabbit Monoclonal Antibody

**Synonyms:** FAP;FAPalpha;SIMP;Seprase;APCE

**Description:** Anti-FAP antibody(DM154) Rabbit Monoclonal Antibody

**Background:** The protein encoded by this gene is a homodimeric integral membrane gelatinase belonging to the serine protease family. It is selectively expressed in reactive stromal fibroblasts of epithelial cancers; granulation tissue of healing wounds; and malignant cells of bone and soft tissue sarcomas. This protein is thought to be involved in the control of fibroblast growth or epithelial-mesenchymal interactions during development; tissue repair; and epithelial carcinogenesis. Alternatively spliced transcript variants encoding different isoforms have been found for this gene.

**Applications:** ELISA; Flow Cyt

**Recommended Dilutions:** ELISA 1:5000-10000; Flow Cyt 1:100

**Host Species:** Rabbit

**Isotype:** Rabbit IgG

**Purification:** Purified from cell culture supernatant by affinity chromatography

**Species Reactivity:** Human FAP

**Constituents:** Lyophilized from sterile PBS, pH 7.4. 5% – 8% trehalose is added as protectants before lyophilization.

**Storage & Shipping:** Store at -20°C to -80°C for 12 months in lyophilized form. After reconstitution, if not intended for use within a month, aliquot and store at -80°C (Avoid repeated freezing and thawing).

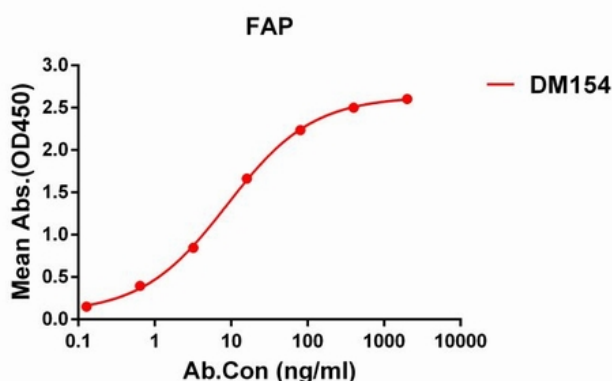


Figure 1. ELISA plate pre-coated by 1 µg/ml (100 µl/well) Human FAP protein, His tagged protein 11422 can bind Rabbit anti-FAP monoclonal antibody (clone: DM154) in a linear range of 1-500 ng/ml.

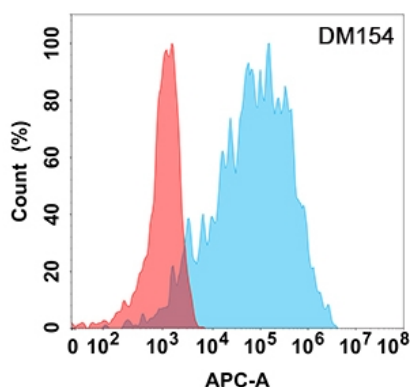


Figure 2. Flow cytometry analysis with Anti-FAP (DM154) on Expi293 cells transfected with human FAP (Blue histogram) or Expi293 transfected with irrelevant protein (Red histogram).