

FASCIN-INTERNAL MAB

Fascin(internal)

Cat. #: 26013

Gene Symbol: FSCN1

Description: Anti-Fascin(internal) Mouse Monoclonal Antibody

Background: Fascin is an ~58 kDa monomeric actin filament bundling protein. It is required to maximally cross-link the actin filaments into straight, compact, and rigid bundles, and contributes to the formation of filopodia that are critical for cell migration. Elevated levels of fascin have been found in metastatic tumors and are correlated with clinically aggressive phenotypes, poor prognosis, and shorter survival.

Immunogen: A peptide from the middle of human Fascin 1

Applications: ELISA, WB, IP, IHC

Recommended Dilutions:

ELISA: 1:1000–1:5000

WB: 1:100–1:2000

IP: 1 μ for 1~2 mg total cellular proteins

IHC: 1:100 dilution

Concentration: 1 mg/ml

Host Species: Mouse

Format: Liquid

Clonality: Monoclonal

Isotype: IgG

Purity: Purified from ascites

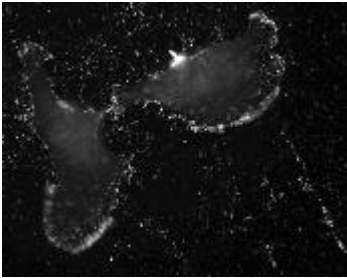
Preservative: No

Constituents: PBS (without Mg^{2+} and Ca^{2+}), pH 7.4, 150 mM NaCl, 50% glycerol

Species Reactivity: Anti-fascin antibody recognizes fascin 1, 2 and 3 of vertebrates.

Storage Conditions: Store at $-20^{\circ}C$. Avoid repeated freezing and thawing

Immunofluorescence:



Detection of fascin by immunofluorescence in 4T1 mouse breast tumor cells with antifascin monoclonal antibody (Cat # 26013).