

## FBXW7(R479L)

### FBXW7(R479L)

**Cat. #:** 26347

**Gene Symbol:** FBW6; FBW7; FBXW7; FBX30; CDC4; SEL10

**Description:** Anti-FBXW7(R479L) Mouse Monoclonal Antibody

**Background:** F-box/WD repeat-containing protein 7 is a protein that in humans is encoded by the FBXW7 gene. The F-box proteins constitute one of the four subunits of ubiquitin protein ligase complex called SCFs (SKP1-cullin-F-box), which function in phosphorylation-dependent ubiquitination. Mutations in this gene are detected in ovarian, breast and colorectal cancer cell lines, implicating the gene's potential role in the pathogenesis of human cancers.

**Immunogen:** A synthetic peptide from the internal region of FBXW7 which includes the mutation of R479L, human origin.

**Applications:** ELISA, WB

**Recommended Dilutions:**

ELISA: 1:1000-1:5000

WB: 1:500-1:1000

**Concentration:** 1 mg/ml

**Host Species:** Mouse

**Format:** Liquid

**Clonality:** Monoclonal

**Isotype:** IgG

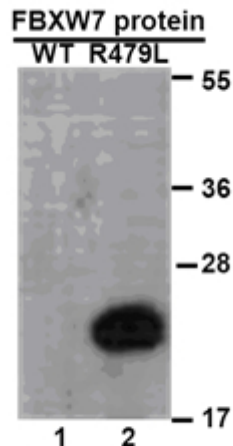
**Purity:** Purified from ascites

**Preservative:** No

**Constituents:** PBS (without Mg<sup>2+</sup> and Ca<sup>2+</sup>), pH 7.4, 150 mM NaCl, 50% glycerol

**Species Reactivity:** Recognizes R479L mutant, but not wild type FBXW7 of vertebrates.

**Storage Conditions:** Store at -20°C. Avoid repeated freezing and thawing

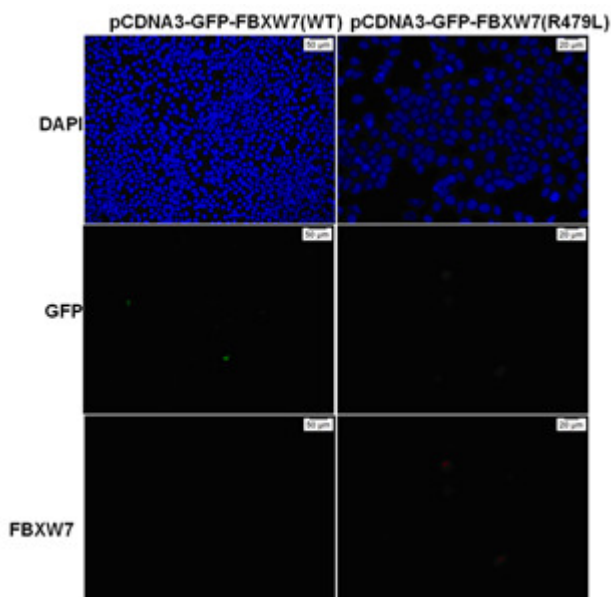


**Western blot:** WB: anti-FBXW7 (R479L) mAb

### Western blot analysis of recombinant FBXW7(R479L) and wild type proteins.

Purified His-tagged FBXW7(R479L) protein (lane 2) and corresponding wild type protein (lane 1) were blotted with Anti-FBXW7(R479L) monoclonal antibody (Cat. #26347).

### Immunofluorescence:



### Immunofluorescence of cells expressing FBXW7 proteins with Anti-FBXW7(R479L) antibody.

HEK293T cells were transfected with pCDNA3-GFP-FBXW7 (WT) plasmid (left column) or pCDNA3-GFP-FBXW7(R479L) plasmid (right column), then fixed and stained with Anti-FBXW7(R479L) monoclonal antibody (Cat. #26347).