

FCGR3A (DMC219) IGG1 CHIMERIC MAB**Cat.#:** 28168**Product Name:** Anti-FCGR3A(DMC219) IgG1 Chimeric Monoclonal Antibody**Synonyms:** FCGR3A;CD16A;FCG3;FCGR3;IGFR3**Description:** Anti-FCGR3A antibody(DMC219) IgG1 Chimeric Monoclonal Antibody

Background: This gene encodes a receptor for the Fc portion of immunoglobulin G; and it is involved in the removal of antigen-antibody complexes from the circulation; as well as other other antibody-dependent responses. This gene (FCGR3A) is highly similar to another nearby gene (FCGR3B) located on chromosome 1. The receptor encoded by this gene is expressed on natural killer (NK) cells as an integral membrane glycoprotein anchored through a transmembrane peptide; whereas FCGR3B is expressed on polymorphonuclear neutrophils (PMN) where the receptor is anchored through a phosphatidylinositol (PI) linkage. Mutations in this gene have been linked to susceptibility to recurrent viral infections; susceptibility to systemic lupus erythematosus; and alloimmune neonatal neutropenia. Alternatively spliced transcript variants encoding different isoforms have been found for this gene.

Applications: ELISA; Flow Cyt**Recommended Dilutions:** ELISA 1:5000-10000; Flow Cyt 1:100**Host Species:** Rabbit**Isotype:** Rabbit:Human Fc chimeric IgG1**Purification:** Purified from cell culture supernatant by affinity chromatography**Species Reactivity:** Human FCGR3A**Constituents:** Lyophilized from sterile PBS, pH 7.4. 5 % – 8% trehalose is added as protectants before lyophilization.**Storage & Shipping:** Store at -20°C to -80°C for 12 months in lyophilized form. After reconstitution, if not intended for use within a month, aliquot and store at -80°C (Avoid repeated freezing and thawing).

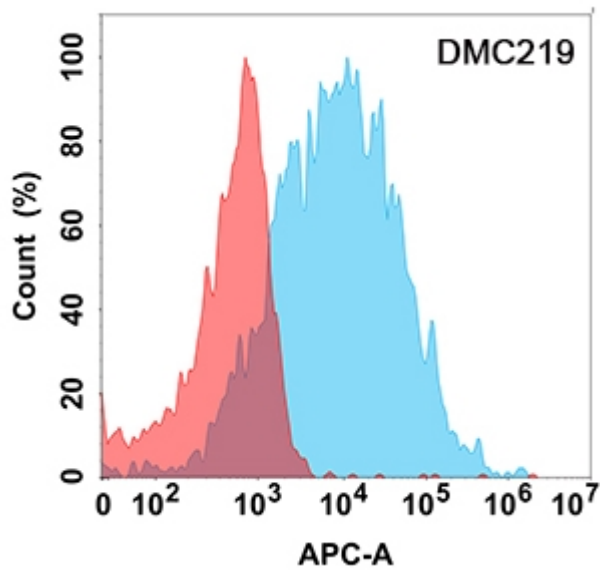


Figure 1. Flow cytometry analysis with Anti-FCGR3A (DMC219) on Expi293 cells transfected with human FCGR3A (Blue histogram) or Expi293 transfected with irrelevant protein (Red histogram).