

## FCRL5 (DMC220) IGG1 CHIMERIC MAB

**Cat.#:** 28169

**Product Name:** Anti-FCRL5(DMC220) IgG1 Chimeric Monoclonal Antibody

**Synonyms:** BXMAS1; CD307; CD307e; FCRH5; IRTA2; PRO820

**Description:** Anti-FCRL5 antibody(DMC220) IgG1 Chimeric Monoclonal Antibody

**Background:** This gene encodes a member of the immunoglobulin receptor superfamily and the Fc-receptor like family. This gene and several other Fc receptor-like gene members are clustered on the long arm of chromosome 1. The encoded protein is a single-pass type I membrane protein and contains 8 immunoglobulin-like C2-type domains. This gene is implicated in B cell development and lymphomagenesis. Alternatively spliced transcript variants encoding different isoforms have been identified.

**Applications:** ELISA; Flow Cyt

**Recommended Dilutions:** ELISA 1:5000-10000; Flow Cyt 1:100

**Host Species:** Rabbit

**Isotype:** Rabbit:Human Fc chimeric IgG1

**Purification:** Purified from cell culture supernatant by affinity chromatography

**Species Reactivity:** Human FCRL5

**Constituents:** Lyophilized from sterile PBS, pH 7.4. 5 % – 8% trehalose is added as protectants before lyophilization.

**Storage & Shipping:** Store at -20°C to -80°C for 12 months in lyophilized form. After reconstitution, if not intended for use within a month, aliquot and store at -80°C (Avoid repeated freezing and thawing).

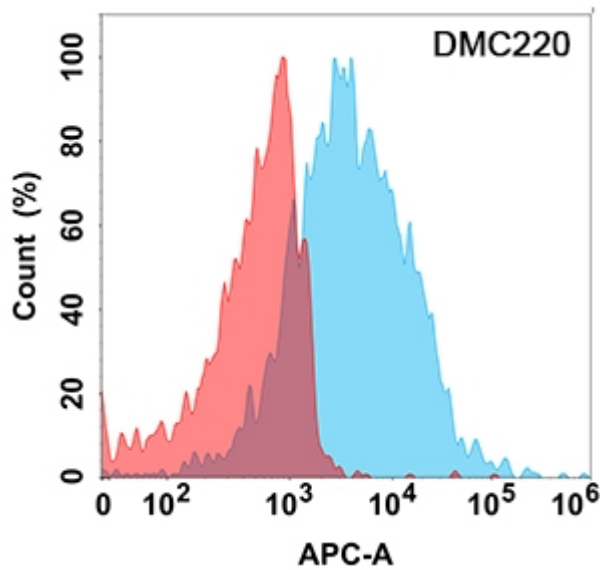


Figure 1. Flow cytometry analysis with Anti-FCRL5 (DMC220) on Expi293 cells transfected with human FCRL5 (Blue histogram) or Expi293 transfected with irrelevant protein (Red histogram).