

FGFR1 MAB

FGFR1

Cat. #: 26294 **Gene Symbol:** FGFR1, BFGFR, CD331, CEK, FGFBR, FLG **Description:**

Anti-FGFR1 Mouse Monoclonal Antibody **Background:** The protein FGFR1 is highly conserved between members throughout evolution. This particular family member of FGFR1 binds both acidic and basic fibroblast growth factors and is involved in limb induction. Mutations of FGFR1 protein have been associated with Pfeiffer syndrome, Jackson-Weiss syndrome, Antley-Bixler syndrome, osteoglophonic dysplasia, squamous cell lung cancer and autosomal dominant Kallmann syndrome. **Immunogen:** A synthetic peptide from the internal region of FGFR1 protein, human origin. **Applications:** ELISA, WB, IHC **Recommended**

Dilutions:

ELISA: 1:1000-1:2000

WB: 1:500-1:1000

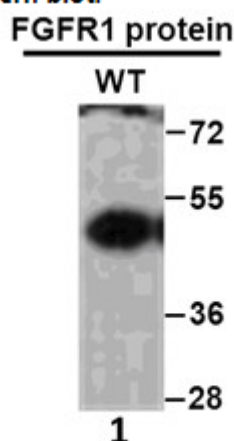
IHC: 1:50-1:100 **Concentration:** 1 mg/ml **Host Species:** Mouse **Format:** Liquid

Clonality: Monoclonal **Isotype:** **Purity:** Purified from ascites **Preservative:** no

Constituents: PBS (without Mg²⁺ and Ca²⁺), pH 7.4, 150 mM NaCl, 50% glycerol

Species Reactivity: Recognizes FGFR1 of vertebrates. **Storage Conditions:** Store at -20°C. Avoid repeated freezing and thawing **Western blot:**

Western blot:



WB: Anti- FGFR1 WT mAb

Western blot analysis of recombinant FGFR1 protein.

Purified full-length His-tagged FGFR1(22-376aa, 45KD) protein was blotted with anti FGFR1 monoclonal antibody (Cat. #26294).