

## FGFR1 NTERMINAL MAB

### FGFR1 Nterminal Monoclonal Antibody

**Cat. #:** 26386

**Gene Symbol:** FGFR1, BFGFR, CD331, CEK, FGFBR, FLG

**Description:** Anti-FGFR1 Nterminal Mouse Monoclonal Antibody

**Background:** The protein FGFR1 is highly conserved between members and throughout evolution. This particular family member of FGFR1 binds both acidic and basic fibroblast growth factors and is involved in limb induction. Mutations of FGFR1 protein have been associated with Pfeiffer syndrome, Jackson-Weiss syndrome, Antley-Bixler syndrome, osteoglophonic dysplasia, squamous cell lung cancer and autosomal dominant Kallmann syndrome.

**Immunogen:** A synthetic peptide from the Nterminal region of FGFR1, human origin.

**Applications:** ELISA, WB, IHC

**Recommended Dilutions:**

ELISA: 1:1000-1:2000

WB: 1:500-1:1000

IHC: 1:50-1:100

**Concentration:** 1 mg/ml

**Host Species:** Mouse

**Format:** Liquid

**Clonality:** Monoclonal

**Isotype:** IgG

**Purity:** Purified from ascites

**Preservative:** No

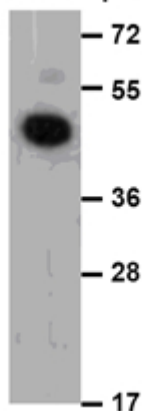
**Constituents:** PBS (without Mg<sup>2+</sup> and Ca<sup>2+</sup>), pH 7.4, 150 mM NaCl, 50% glycerol

**Species Reactivity:** Recognizes N-Termina (22-376aa) and full-length FGFR1 of vertebrates.

**Storage Conditions:** Store at -20°C. Avoid repeated freezing and thawing

## Western blot:

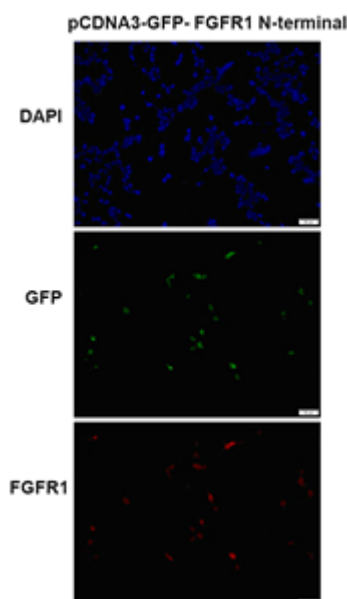
FGFR1 N-terminal protein



WB: anti-FGFR1 N-terminal mAb

Western blot analysis of recombinant FGFR1 N-terminal protein. Purified His-tagged FGFR1 N-terminal protein (22-376aa, 45KD) was blotted with Anti-FGFR1 N-terminal monoclonal antibody (Cat. #26386).

## Immunofluorescence:



**Immunofluorescence of cells expressing FGFR1 N-terminal proteins with Anti-FGFR1 N-terminal antibody.** HEK293T cells were transfected with pCDNA3-GFP-FGFR1 N-terminal plasmid, then fixed and stained with Anti-FGFR1 N-terminal monoclonal antibody (Cat. #26386).