

FGFR1(P252S)**FGFR1(P252S)****Cat. #:** 26254**Gene Symbol:** FGFR1, BFGFR, CD331, CEK, FGFR, FLG**Description:** Anti-FGFR1(P252S) Mouse Monoclonal Antibody

Background: The protein FGFR1 is highly conserved between members and throughout evolution. This particular family member of FGFR1 binds both acidic and basic fibroblast growth factors and is involved in limb induction. Mutations of FGFR1 protein have been associated with Pfeiffer syndrome, Jackson-Weiss syndrome, Antley-Bixler syndrome, osteoglophonic dysplasia, squamous cell lung cancer and autosomal dominant Kallmann syndrome.

Immunogen: A synthetic peptide from the internal region of FGFR1 which includes the mutation of P252S, human origin.

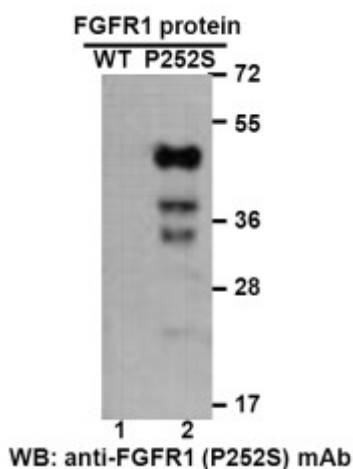
Applications: ELISA, WB, IHC**Recommended Dilutions:**

ELISA: 1:1000–1:2000

WB: 1:500–1:1000

IHC: 1:50–1:100

Concentration: 1 mg/ml**Host Species:** Mouse**Format:** Liquid**Clonality:** Monoclonal**Isotype:** IgG**Purity:** Purified from ascites**Preservative:** No**Constituents:** PBS (without Mg²⁺ and Ca²⁺), pH 7.4, 150 mM NaCl, 50% glycerol**Species Reactivity:** Recognizes P252S mutant, but not wild type FGFR1 of vertebrates.**Storage Conditions:** Store at –20°C. Avoid repeated freezing and thawing

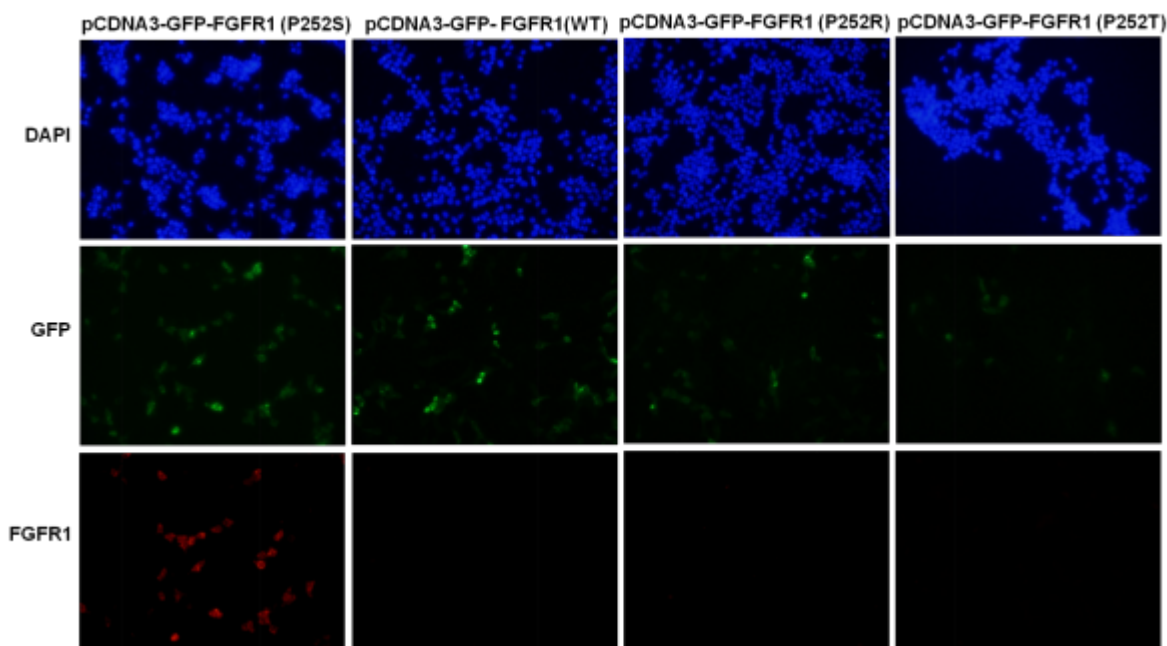


Western blot:

Western blot analysis of recombinant FGFR1(P252S) and wild type proteins.

Purified His-tagged FGFR1(P252S) protein (22-376aa, 45KD, lane 2) and corresponding wild type protein (lane 1) were blotted with Anti-FGFR1(P252S) monoclonal antibody (Cat. #26254).

Immunofluorescence:



Immunofluorescence of cells expressing FGFR1 proteins with Anti-FGFR1(P252S) antibody.

HEK293T cells were transfected with pCDNA3-GFP-FGFR1(P252S) plasmid, pCDNA3-GFP-FGFR1 (WT) plasmid, pCDNA3-GFP-FGFR1 (P252R) plasmid or pCDNA3-GFP-FGFR1 (P252T) plasmid, then fixed and stained with Anti-FGFR1(P252S) monoclonal antibody (Cat. #26254).