

## FGFR1(R576W)

### FGFR1(R576W)

**Cat. #: 26257**

**Gene Symbol: FGFR1, BFGFR, CD331, CEK, FGFBR, FLG**

**Description: Anti-FGFR1(R576W) Mouse Monoclonal Antibody**

**Background:** The protein FGFR1 is highly conserved between members and throughout evolution. This particular family member of FGFR1 binds both acidic and basic fibroblast growth factors and is involved in limb induction. Mutations of FGFR1 protein have been associated with Pfeiffer syndrome, Jackson-Weiss syndrome, Antley-Bixler syndrome, osteoglophonic dysplasia, squamous cell lung cancer and autosomal dominant Kallmann syndrome.

**Immunogen:** A synthetic peptide from the internal region of FGFR1 which includes the mutation of R576W, human origin.

**Applications:** ELISA, WB, IHC

**Recommended Dilutions:**

**ELISA: 1:1000–1:2000**

**WB: 1:500–1:1000**

**IHC: 1:50–1:100**

**Concentration: 1 mg/ml**

**Host Species: Mouse**

**Format: Liquid**

**Clonality: Monoclonal**

**Isotype: IgG**

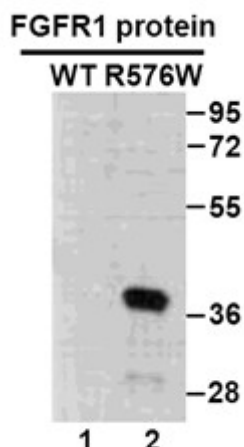
**Purity: Purified from ascites**

**Preservative: No**

**Constituents:** PBS (without Mg<sup>2+</sup> and Ca<sup>2+</sup>), pH 7.4, 150 mM NaCl, 50% glycerol

**Species Reactivity:** Recognizes R576W mutant, but not wild type FGFR1 of vertebrates.

**Storage Conditions:** Store at -20°C. Avoid repeated freezing and thawing

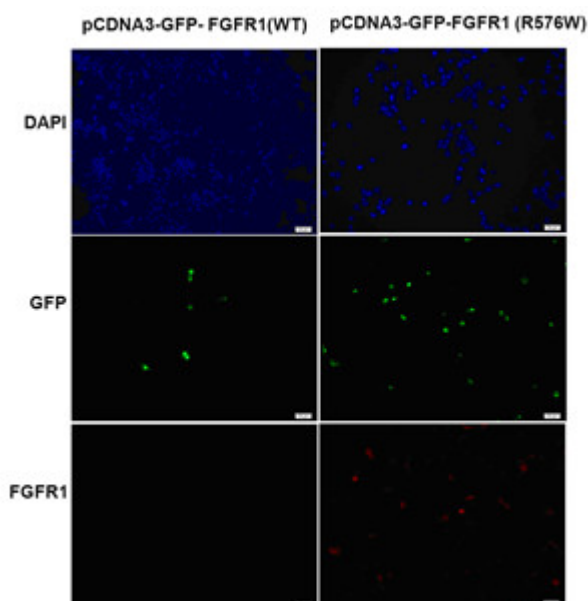


**Western blot:** WB: Anti- FGFR1 (R576W) mAb

**Western blot analysis of recombinant FGFR1(R576W) and wild type proteins.**

**Purified His-tagged FGFR1(R576W) protein (478-767aa, 38KD, lane 2,) and corresponding wild type protein (lane 1) were blotted with Anti-FGFR1(R576W) monoclonal antibody (Cat. #26257).**

**Immunofluorescence:**



**Immunofluorescence of cells expressing FGFR1 proteins with Anti-FGFR1(R576W) antibody.**

HEK293T cells were transfected with pCDNA3-GFP-FGFR1 (WT) plasmid (left column) or pCDNA3-GFP-FGFR1(R576W) plasmid (right column), then fixed and stained with Anti-FGFR1(R576W) monoclonal antibody (Cat. #26257).