

FOLR2 (DMC390) IGG1 CHIMERIC MAB

Cat.#: 28208

Product Name: Anti-FOLR2(DMC390) IgG1 Chimeric Monoclonal Antibody

Synonyms: BETA-HFR; FBP; FBP:PL-1; FOLR1; FR-BETA; FR-P3; FRbeta

Description: Anti-FOLR2 antibody(DMC390) IgG1 Chimeric Monoclonal Antibody

Background: The protein encoded by this gene is a member of the folate receptor (FOLR) family; and these genes exist in a cluster on chromosome 11. Members of this gene family have a high affinity for folic acid and for several reduced folic acid derivatives; and they mediate delivery of 5-methyltetrahydrofolate to the interior of cells. This protein has a 68% and 79% sequence homology with the FOLR1 and FOLR3 proteins; respectively. Although this protein was originally thought to be specific to placenta; it can also exist in other tissues; and it may play a role in the transport of methotrexate in synovial macrophages in rheumatoid arthritis patients. Multiple transcript variants that encode the same protein have been found for this gene.

Applications: Flow Cyt

Recommended Dilutions: Flow Cyt 1:100

Host Species: Rabbit

Isotype: Rabbit:Human Fc chimeric IgG1

Purification: Purified from cell culture supernatant by affinity chromatography

Species Reactivity: Human FOLR2

Constituents: Lyophilized from sterile PBS, pH 7.4. 5 % – 8% trehalose is added as protectants before lyophilization.

Storage & Shipping: Store at -20°C to -80°C for 12 months in lyophilized form. After reconstitution, if not intended for use within a month, aliquot and store at -80°C (Avoid repeated freezing and thawing).

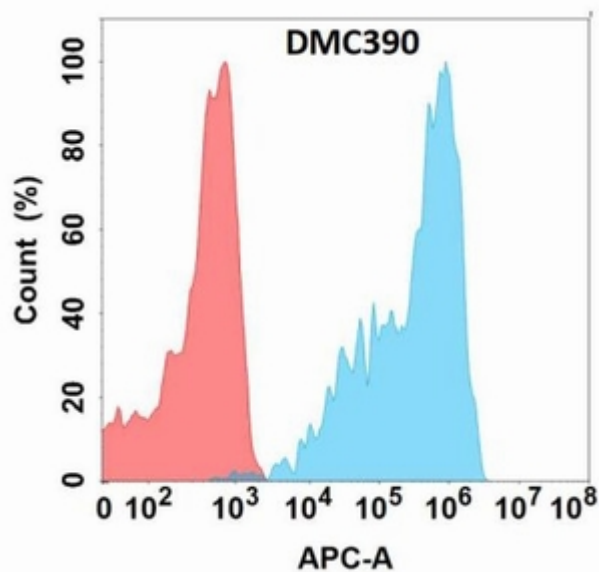


Figure 1. Flow cytometry analysis with Anti-FOLR2 (DMC390) on Expi293 cells transfected with human FOLR2 (Blue histogram) or Expi293 transfected with irrelevant protein (Red histogram).