

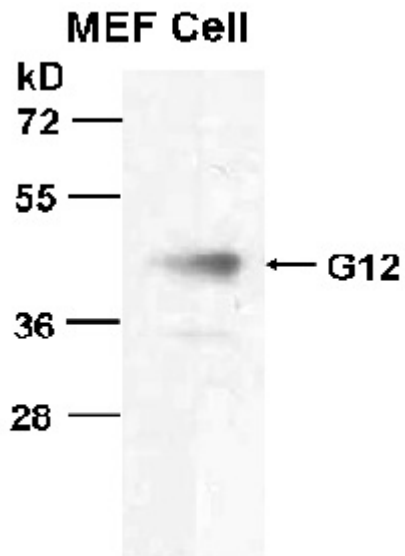
**GA12 MAB****Gα<sub>12</sub> Monoclonal Antibody****Cat. #:** 26026**Gene Symbol:** GNA12**Description:** Anti-Gα<sub>12</sub> Mouse Monoclonal Antibody**Background:** Heterotrimeric G proteins are essential cellular signal transducers. Gα<sub>12</sub> is a member of the G12/13 subfamily of G proteins. Biochemical and physiological functions of Gα<sub>12</sub> are being explored.**Immunogen:** A synthetic peptide from the N-terminal region of human Gα<sub>12</sub> protein**Applications:** ELISA, WB, IHC, IP**Recommended Dilutions:** ELISA 1:1000–1:5000

WB 1:100–1:2000

IHC 1:50–1:100

**Concentration:** 1 mg/ml**Host Species:** Mouse**Format:** Liquid**Clonality:** Monoclonal**Isotype:** IgG**Purity:** Purified from ascites**Preservative:** No**Constituents:** PBS (without Mg<sup>2+</sup> and Ca<sup>2+</sup>), pH 7.4, 150 mM NaCl, 50% glycerol**Species Reactivity:** Gα<sub>q</sub> subfamily antibody recognizes all members of the Gq subfamily of vertebrates.**Storage Conditions:** Store at –20°C. Avoid repeated freezing and thawing

**Western blot:**



**WB: anti-Gna12 mAb**

**Western blot analysis of  $G\alpha_{12}$  proteins.** MEF whole-cell lysate was used for western blot with anti-  $G\alpha_{12}$  mouse monoclonal antibody (cat. # 26026).