

GA12 PAB**Gα₁₂ Polyclonal Antibody****Cat. #:** 21013**Gene Symbol:** Gna12**Description:** Anti-Gα₁₂ Rabbit Polyclonal Antibody

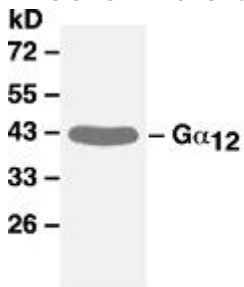
Background: Heterotrimeric G proteins are essential cellular signal transducers. Gα₁₂ is a member of the G_{12/13} subfamily of G proteins. Biochemical and physiological functions of Gα₁₂ are being explored.

Immunogen: Recombinant full length Gα₁₂ protein**Applications:** ELISA, WB, IHC**Recommended Dilutions:** ELISA: 1:1000–1:5000

WB: 1:100–1:2000

Concentration: 1 mg/ml**Host Species:** Rabbit**Format:** Liquid**Clonality:** Polyclonal**Isotype:** IgG**Purity:** Purified from serum**Preservative:** No**Constituents:** PBS (without Mg²⁺ and Ca²⁺), pH 7.4, 150 mM NaCl, 50% glycerol**Species Reactivity:** Gα₁₂ polyclonal antibody recognizes Gα₁₂ of vertebrates.**Storage Conditions:** Store at –20°C. Avoid repeated freezing and thawing

Western blot:



WB: anti- $G\alpha_{12}$ pAb

Western blot analysis of $G\alpha_{12}$ proteins.

MEF whole-cell lysates were used for western blot with Anti- $G\alpha_{12}$ polyclonal antibody (cat # 21013).