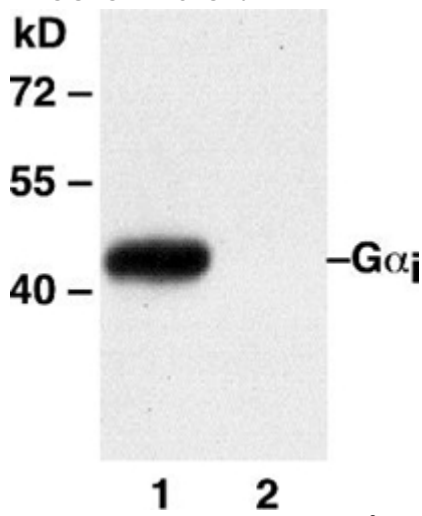


GAI MAB**Gα_i Monoclonal Antibody****Cat. #:** 26003**Gene Symbol:** Gnai**Description:** Anti-Gα_i Mouse Monoclonal Antibody**Background:** Heterotrimeric G proteins are critical cellular signal transducers. Gai represents one sub-family of G proteins that could mediate the inhibition of adenylyl cyclases. Other biochemical and physiological functions of Gai proteins are being explored.**Immunogen:** Recombinant full length protein of Gα_{i1}**Applications:** ELISA, WB, IHC**Recommended Dilutions:** ELISA 1:1000–1:5000, WB 1:1000–1:2000, IHC 1:100–1:200**Concentration:** 1 mg/ml**Host Species:** Mouse**Format:** Liquid**Clonality:** Monoclonal**Isotype:** IgG**Purity:** Purified from ascites**Preservative:** No**Constituents:** PBS (without Mg²⁺ and Ca²⁺), pH 7.4, 150 mM NaCl, 50% glycerol**Species Reactivity:** Gα_i antibody recognizes Gα_{i1}, Gα_{i2}, and Gα_{i3} of vertebrates**Storage Conditions:** Store at -20°C. Avoid repeated freezing and thawing

Western blot:



Western blot analysis of Gi proteins. $G\alpha_{i1}$ plasmid DNA was transiently transfected into HEK-293 cells. Whole-cell lysate was used for western blots. The monoclonal anti- $G\alpha_i$ antibody was pre-incubated without (lane 1) or with (lane 2) the antigen protein ($G\alpha_{i1}$) to show the specificity.