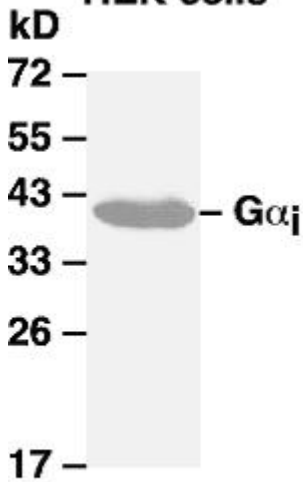


GAI PAB**Gα_i Polyclonal Antibody****Cat. #:** 21006**Gene Symbol:** Gα_i**Description:** Anti-Gα_i Rabbit Polyclonal Antibody

Background: Heterotrimeric G proteins are critical cellular signal transducers. Gα_i represents one sub-family of G proteins that could mediate the inhibition of adenylyl cyclases. Other biochemical and physiological functions of Gα_i proteins are being explored.

Immunogen: Recombinant full length protein of Gα_{i1}**Applications:** ELISA, WB, IHC**Recommended Dilutions:** ELISA 1:100–1:5000, WB 1:100–1:2000**Concentration:** 1 mg/ml**Host Species:** Rabbit**Format:** Liquid**Clonality:** Polyclonal**Isotype:** IgG**Purity:** Purified from serum**Preservative:** No**Constituents:** PBS (without Mg²⁺ and Ca²⁺), pH 7.4, 150 mM NaCl, 50% glycerol**Species Reactivity:** Gα_i antibody recognizes Gα_{i1}, Gα_{i2}, and Gα_{i3} of vertebrates**Storage Conditions:** Store at -20°C. Avoid repeated freezing and thawing

Western blot:
HEK cells



WB: anti- $G\alpha_i$ pAb

Western blot analysis of Gi proteins.

$G\alpha_i$ plasmid DNA was transiently transfected into HEK-293 cells. Whole-cell lysate was used for western blot with the polyclonal anti $G\alpha_i$ antibody (cat # 21006).