

## GA<sub>o</sub> PAB

### GA<sub>o</sub> Polyclonal Antibody

**Cat. #:** 21015

**Gene Symbol:** Gnao

**Description:** Anti-GA<sub>o</sub> Rabbit Polyclonal Antibody

**Background:** Heterotrimeric G proteins are critical cellular signal transducers. GA<sub>o</sub> belongs to the Gi sub-family of G proteins that could mediate the inhibition of adenylyl cyclases. Other biochemical and physiological functions of GA<sub>o</sub> proteins are being explored.

**Immunogen:** Recombinant full length protein of GA<sub>o</sub>.

**Applications:** ELISA, WB, IHC

**Recommended Dilutions:** ELISA 1:1000–1:5000  
WB 1:100–1:2000

**Concentration:** 1 mg/ml

**Host Species:** Rabbit

**Format:** Liquid

**Clonality:** Polyclonal

**Isotype:** IgG

**Purity:** Purified from serum

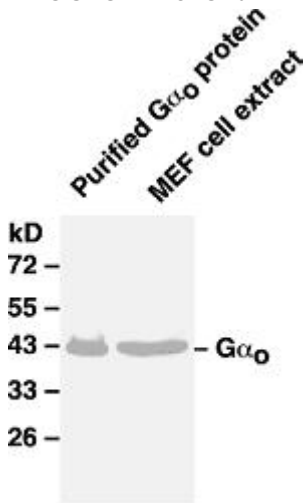
**Preservative:** No

**Constituents:** PBS (without Mg<sup>2+</sup> and Ca<sup>2+</sup>), pH 7.4, 150 mM NaCl, 50% glycerol

**Species Reactivity:** GA<sub>o</sub> antibody recognizes GA<sub>o</sub> of vertebrates.

**Storage Conditions:** Store at -20°C. Avoid repeated freezing and thawing

## Western blot:



WB: anti-Gα<sub>o</sub> pAb

## Western blot analysis of Go proteins.

Whole-cell lysate of MEF cells or purified Gα<sub>o</sub> protein were used for western blots with the polyclonal anti Gα<sub>o</sub> antibody (Cat # 21015).