

GAPDH PAB**GAPDH Polyclonal Antibody****Cat. #:** 21012**Gene Symbol:** GAPDH**Description:** Anti-GAPDH Rabbit Polyclonal Antibody

Background: Glyceraldehyde-3-phosphate dehydrogenase (GAPDH) catalyzes the reversible oxidative phosphorylation of glyceraldehyde-3-phosphate, an important energy-yielding step in carbohydrate metabolism. Additional functions of GAPDH include acting as a uricil DNA glycosylase, activating transcription, binding RNA and involvement in nuclear RNA export, DNA replication and DNA repair. Furthermore, expression of GAPDH is upregulated in liver, lung and prostate cancers. Moreover, GAPDH complexes with neuronal proteins implicated in human neuro-degenerative disorders including the β -Amyloid precursor, Huntingtin and other triplet repeat neuronal disorder proteins.

Immunogen: A synthetic peptide near the C-terminus of GAPDH of human origin

Applications: ELISA, WB, IHC**Recommended Dilutions:**

ELISA 1:100–1:5000

WB 1:100–1:2000

IHC 1:50–1:100

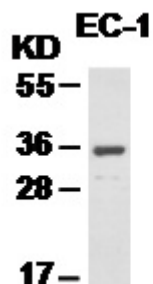
Concentration: 0.2 mg/ml**Host Species:** Rabbit**Format:** Liquid**Clonality:** Polyclonal**Isotype:** IgG**Purity:** Purified from serum**Preservative:** No

Constituents: PBS (without Mg^{2+} and Ca^{2+}), pH 7.4, 150 mM NaCl, 50% glycerol

Species Reactivity: Anti-GAPDH antibody recognizes GAPDH of vertebrates

Storage Conditions: Store at $-20^{\circ}C$. Avoid repeated freezing and thawing

Western blot:



WB: anti-GAPDH pAb

EC-1 cell lysate was used for Western blot with Anti-GAPDH polyclonal antibody (Cat # 21012).