

## GAS PAB

### $G\alpha_s$ Polyclonal Antibody

**Cat. #:** 21007

**Gene Symbol:** Gnas

**Description:** Anti- $G\alpha_s$  Rabbit Polyclonal Antibody

**Background:** Heterotrimeric G proteins are critical cellular signal transducers.  $G\alpha_s$  represents one sub-family of G proteins that could mediate the stimulation of adenylyl cyclases.

**Immunogen:** Recombinant full length protein of  $G\alpha_s$

**Applications:** ELISA, WB, IHC

**Recommended Dilutions:** ELISA 1:100–1:5000 WB 1:100–1:2000

**Concentration:** 1 mg/ml

**Host Species:** Rabbit

**Format:** Liquid

**Clonality:** Polyclonal

**Isotype:** IgG

**Purity:** Purified from serum

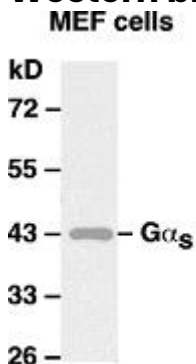
**Preservative:** No

**Constituents:** PBS (without  $Mg^{2+}$  and  $Ca^{2+}$ ), pH 7.4, 150 mM NaCl, 50% glycerol

**Species Reactivity:**  $G\alpha_s$  antibody recognizes  $G\alpha_s$  of vertebrates

**Storage Conditions:** Store at  $-20^{\circ}C$ . Avoid repeated freezing and thawing

#### Western blot:



WB: anti- $G\alpha_s$  pAb

#### Western blot analysis of $G\alpha_s$ proteins.

MEF whole-cell lysate was used for western blots.



# Product Description

Pioneering GTPase and Oncogene Product Development since 2010

---