

GDF15 (DMC474) IGG1 CHIMERIC MAB**Cat.#:** 28250**Product Name:** Anti-GDF15(DMC474) IgG1 Chimeric Monoclonal Antibody**Synonyms:** GDF-15; MIC-1; MIC1; NAG-1; PDF; PLAB; PTGFB**Description:** Anti-GDF15 antibody(DMC474) IgG1 Chimeric Monoclonal Antibody

Background: This gene encodes a secreted ligand of the TGF-beta (transforming growth factor-beta) superfamily of proteins. Ligands of this family bind various TGF-beta receptors leading to recruitment and activation of SMAD family transcription factors that regulate gene expression. The encoded preproprotein is proteolytically processed to generate each subunit of the disulfide-linked homodimer. The protein is expressed in a broad range of cell types; acts as a pleiotropic cytokine and is involved in the stress response program of cells after cellular injury. Increased protein levels are associated with disease states such as tissue hypoxia; inflammation; acute injury and oxidative stress. [provided by RefSeq; Aug 2016]

Applications: Flow Cyt**Recommended Dilutions:** Flow Cyt 1:100**Host Species:** Rabbit**Isotype:** Rabbit:Human Fc chimeric IgG1**Purification:** Purified from cell culture supernatant by affinity chromatography**Species Reactivity:** Human GDF15**Constituents:** Lyophilized from sterile PBS, pH 7.4. 5 % – 8% trehalose is added as protectants before lyophilization.**Storage & Shipping:** Store at -20°C to -80°C for 12 months in lyophilized form. After reconstitution, if not intended for use within a month, aliquot and store at -80°C (Avoid repeated freezing and thawing).

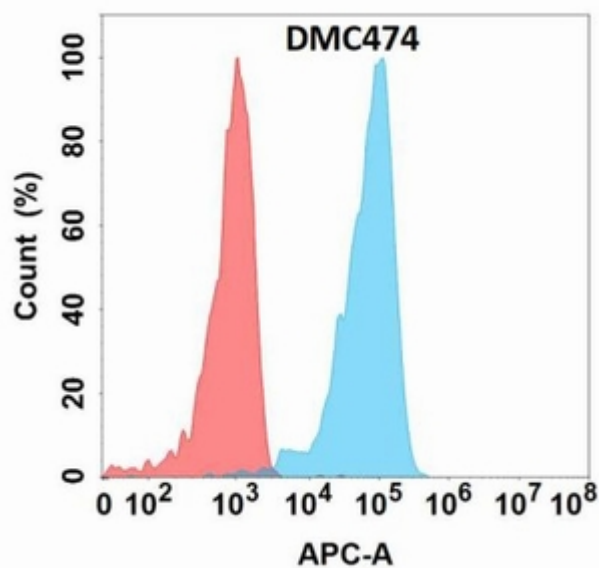


Figure 1. Flow cytometry analysis with Anti-GDF15 (DMC474) on Expi293 cells transfected with human GDF15 (Blue histogram) or Expi293 transfected with irrelevant protein (Red histogram).